



POSS ANGUS

LEADING EDGE GENETICS



POSS equals POWER

Fall Female Sale

◀ **SEPTEMBER 8, 2021 - 5 PM** ▶

AT THE RANCH NEAR SCOTIA, NEBRASKA

SELLING 40+ HEAD

Donor Cows, Heifer Calves, Heifer Pregnancies, Bred Heifers & Bred Cows

Welcome



It is with great excitement that our family invites you to another Fall Female Sale. 2021 has already been an unforgettable year for Poss Angus. We have been blessed to share our progress with great customers, as well as create new relationships with the wonderful people we have been fortunate enough to meet throughout this industry.

Through the ability of utilizing our embryo program, we will be offering only the very best out of our herd. We have always felt that through every offering brought to the market place we only want to sell straight off the top of the herd. Several of these females are a large portion of our factory that have contributed to our bull sales. The young females in this sale are some of the most progressive genetics we have to offer that are sure to be a solid wis the influence of Deadwood, as well as half interest in the dam of Rawhide. We have also decided

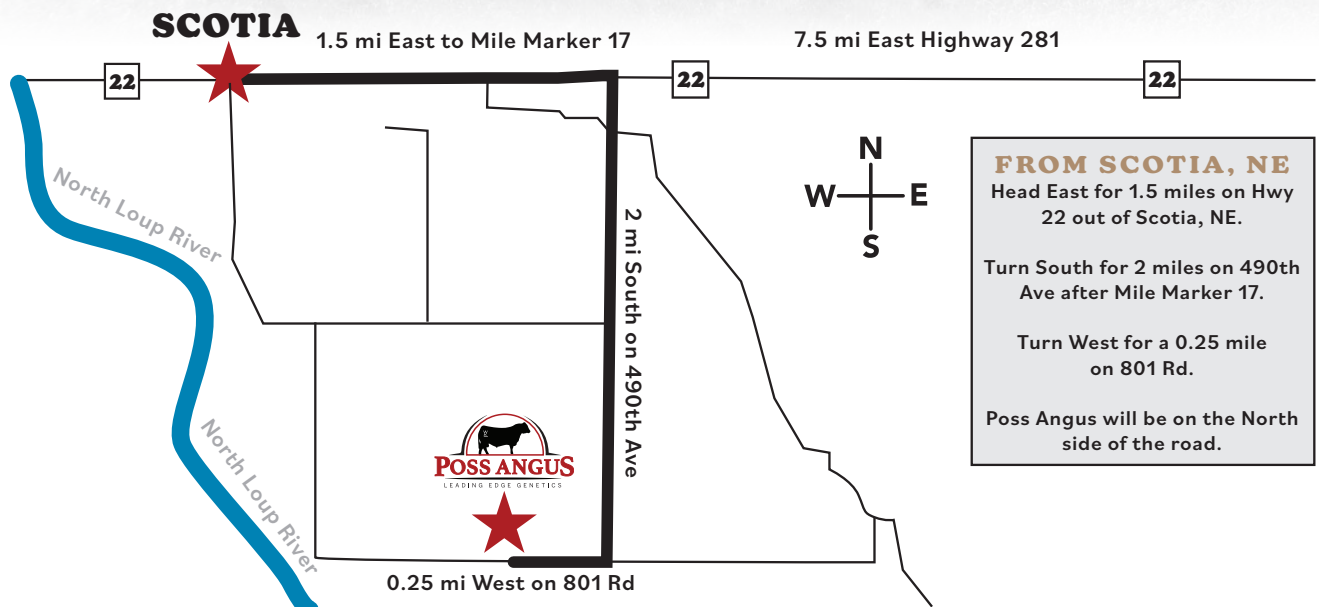
to offer up two elite heifers sired by Connealy Clarity out of the dam of Rawhide. These two females will be sure to take any herd to a new level. There truly is something for even the most critical in this offering!

As always, customer satisfaction is our number one priority. If you have any questions at all, be sure to give any of us a call, we would enjoy a visit with you. The sale will begin at 5 PM with a meal and refreshments to follow. We look forward to seeing you September 8th at the ranch south of Scotia!

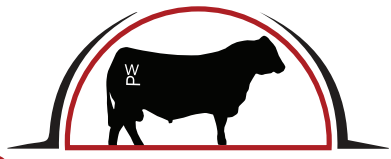
The Poss Family



DIRECTIONS TO THE SALE SITE



POSS equals POWER



POSS ANGUS
LEADING EDGE GENETICS

Fall Female Sale

SEPTEMBER 8, 2021 - 5 PM
AT THE RANCH NEAR SCOTIA, NEBRASKA

SALE LOCATION

Poss Angus - 48981 801st Road - Scotia, NE 68875

SALE CONTACTS

Danny Poss.....308-571-0417, bulls@possangus.com
Nolan Poss.....308-571-0559
Nathan Poss.....308-571-0506

AUCTIONEER

Matt Lowery.....308-750-6119

CONSULTANTS

Chris Earl, CK6 Consulting.....630-675-6559
Wes Tiemann, CK6 Consulting.....816-244-4462
Matt Myers, Myers Cattle Services.....405-315-7258
Tom Dalbey.....404-372-0973
Myron Benes.....402-741-2040

REPRESENTATIVES

Levi Landers, Angus Journal.....308-730-1396
Alan Sears, Western Ag Reporter.....970-396-7521
Randy Rasby, Livestock Plus.....402-539-6195
Chris Beutler, Cattle Business Weekly....402-380-8244
Ryan Large, DV Auction.....308-340-9859

ACCOMMODATIONS

Cobblestone Inn & Suites - Ord, NE.....308-728-5122
Super 8 Motel - St. Paul, NE.....308-754-4554

INSURANCE

Jared Mohnen of Dakota Ag Insurance will be available to insure your purchases. 605-999-4475

LIABILITY

Poss Angus assumes no liability in the event of an accident. Persons attending the sale do so at their own risk.

PHONE BIDDING

Phone bids will be handled in a confidential manner. If you are unable to attend the sale, please contact Danny or Nolan prior to the sale for assistance.

TERMS

All cattle will sell under the recommended terms and conditions of the American Angus Association. Payment will be made on sale day or within 30 days unless other arrangements have been made.

TRUCKING

Truckers believed to be reliable will be able to assist in deliveries. Any animal purchased within the state will be delivered to a central point. Randy Lathrop 847-910-4673

HEALTH

All cattle will be accompanied by proper health certificates for immediate shipment.

GUARANTEE

Poss Angus will guarantee 100% satisfaction on all sight unseen purchases through any of the consultants or representatives associated with the sale.

ONLINE BIDDING



Real-time and proxy bidding will be available through DVAuction.com. Videos will be posted prior to the sale. For general questions, please contact the office at 402-316-5460.

Danny, Kristi, Nolan, Nathan, Neleigh and Natalie Poss
48981 801st Rd | Scotia, NE 68875 | bulls@possangus.com
Danny: 308-571-0417 | Nolan: 308-571-0559 | Nathan: 308-571-0506



PossAngus.com

Feature Lots

Lot 1

Poss Blueblood 6502 ET

COW | REG: 18631711 | DOB: 02/03/16 | TAT: 6502 **ANGUSGS**



Poss Total Impact 745
Poss Easy Impact 0119
 Poss Elmaretta 736

Connealy All Around
Poss Blueblood 920
 Poss Blueblood Lady 5114

TC Total 410
 Poss Blackcap 5116
 Hyline Right Time 338
 Poss Elmaretta 025
 Connealy Whitman
 Entrust of Conanga 894
 Hyline Right Time 338
 Poss Blueblood Lady 063

CED	BW	WW	YW	SC	HP	CEM	MILK
4	1.5	72	123	0.54	16.5	7	21
CW	MARB	RE	\$M	\$F	\$G	\$B	\$C
64	0.95	0.90	73	117	65	182	309

- **Selling half interest and no possession. Bred to Poss Wrangler due 2/6/2022.**
- 6502 ranks in the top 25% for 17 different EPDS or \$values including top 1% \$C and 2% \$B, \$F.
- The dam of the \$140,000 Poss Rawhide at ST Genetics. Rawhide will cut a path in the industry for a sire with elite production traits that will perform in the top percentiles of PAP and growth - a very difficult feat.
- 6502 has the phenotype and performance record one desires in a donor. She currently has 2@103 BWR, 2@104 WWR, 2@101 YWR, and 12@105 RE and MARB ratio.
- One of the elite cows to not only sell this year but in the last several years. She is one to build or improve a program around.
- Her dam, Poss Blueblood 920, was one of the best females ever bred at Poss Angus and the mating to Poss Easy Impact that created 6502 made her even better.



Poss Rawhide Son of Lot 1
 2020 High Seller sold to ST Genetics



Poss Dependant Son of Lot 1
 Third High Seller from 2021 Sale to Grimmius Cattle Co



Poss No Doubt 0669 Son of Lot 1
 2021 Sale Highlight sold to Diamond J Angus, ND

Build your program around 6502!

Lot
1A

Poss Blueblood 1513 ET

COW | REG: 20060428 | DOB: 01/19/21 | TAT: 1513 ANGUSGS

Cherry Creek Land Grant
Connealy Clarity
Breshie of Conanga 6988

Poss Easy Impact 0119

Poss Blueblood 6502

Poss Blueblood 920

K C F Bennett Homestead
Cherry Crk Eva B27 M
Connealy Confidence Plus
Brelly of Conanga 367
Poss Total Impact 745
Poss Elmaretta 736
Connealy All Around
Poss Blueblood Lady 5114

CED	BW	WW	YW	SC	HP	CEM	MILK
8	1.4	81	147	0.55	20.6	12	24
CW	MARB	RE	\$M	\$F	\$G	\$B	\$C
85	0.93	1.14	107	145	70	215	386



Connealy Clarity Reference Sire

- Selling half interest with option to double purchase price for full ownership.
- 1513 ranks in the top 25% for 17 different EPDS or \$values including top 1% for HP, Docility, CW, \$M, \$F, \$B and \$C.
- The only female in the breed with her \$C that ranks in top 1% for Docility and HP.
- As you look forward in the Angus business, value will come in diversity of pedigree that creates a desired kind with a communicative EPD of that performance and phenotype. 1513 and her sister offer great diversity and promise for most programs and the marketplace.

Lot
1B

Poss Blueblood 1501 ET

COW | REG: 20060406 | DOB: 01/17/21 | TAT: 1501 ANGUSGS

Cherry Creek Land Grant
Connealy Clarity
Breshie of Conanga 6988

Poss Easy Impact 0119

Poss Blueblood 6502

Poss Blueblood 920

K C F Bennett Homestead
Cherry Crk Eva B27 M
Connealy Confidence Plus
Brelly of Conanga 367
Poss Total Impact 745
Poss Elmaretta 736
Connealy All Around
Poss Blueblood Lady 5114

CED	BW	WW	YW	SC	HP	CEM	MILK
8	0.4	80	146	1.16	18.1	9	25
CW	MARB	RE	\$M	\$F	\$G	\$B	\$C
81	1.37	0.97	93	138	84	222	381



- Selling half interest and no possession.
- 1501 ranks in the top 25% for 15 different EPDS or \$values including top 1% for Docility, \$M, \$F, \$G, \$B and \$C.
- The only female in the breed with her combination of Marbling, CED, Doc and \$C.
- The deceased Connealy Clarity not only took the breed by storm on price discovery for semen value, but also looks like a true genetic outlier gone before his time.
- Great opportunity here to get on the front end of performance, marketing and genetics with great people.

Lot
1C

Poss Blueblood 0909 ET

COW | REG: 19920192 | DOB: 08/28/20 | TAT: 0909 ANGUSGS

KM Broken Bow 002
Spring Cove Reno 4021
Spring Cove Liza 021

Poss Easy Impact 0119

Poss Blueblood 6502

Poss Blueblood 920

Summitcrest Complete 1P55
Summitcrest Princess 0P12
C C A Emblazon 702
Spring Cove Liza 721
Poss Total Impact 745
Poss Elmaretta 736
Connealy All Around
Poss Blueblood Lady 5114

CED	BW	WW	YW	SC	HP	CEM	MILK
3	1.2	79	132	0.99	22.7	11	28
CW	MARB	RE	\$M	\$F	\$G	\$B	\$C
63	1.03	0.72	99	109	68	177	329



Spring Cove Reno 4021 Reference Sire

- 0909 ranks in the top 25% for 14 different EPDS or \$values including top 1% \$C, HP and \$M.
- One of the standout yearlings from our fall program with a great balance of pedigree, EPD profile and phenotype.
- Spring Cove Reno is just now starting to get appreciated for his great maternal effort across many different types of genetics. Strong in their muscle pattern, udder quality and chest width, the Reno daughters will produce some of the excellent herd bull prospects across the country in the next couple years.
- Donor prospect that offers excellent pedigree flexibility for embryo production for spring or fall programs.

Lot
2

Woodhill Relevance x Poss Ellunamere 399 HEIFER PREGNANCY DUE 2/2/22



Poss Ellunamere 399 Dam of Lot 2

Connealy Confidence Plus
Woodhill Relevance
Woodhill Blackbird X197-Z7

Poss Easy Impact 0119
Poss Ellunamere 399
Poss Ellunmere 0170

Connealy Confidence 0100
Elbanna of Conanga 1209
Hoover Dam
Woodhill Blackbird U80-X197
Poss Total Impact 745
Poss Elmaretta 736
G A R Predestined
Poss Ellunmere 204

- The maternal brother to this mating, Poss Deadwood, was the record setting \$900,000 bull of the 2021 Poss Angus Bull Sale. Deadwood has gone on to set new standards of price discovery for frozen genetics by the worldwide desire of his kind.
- The donor dam, Poss Ellunamere 399, is the only proven female in the breed with her combination of CED, Marb, \$B, \$C, Angle and Claw at the young age of 8.
- The deceased sire of this heifer pregnancy, Woodhill Relevance, was a featured member of the ABS Global Sire lineup and ranks in the top 25% for an excellent 14 EPDS or \$values. His combination of calving ease, marbling, docility and a 0.3 YH makes for a perfect combination on 399. Pedigree diversity is and will be a dominant force of value in the future and what a great place to position your program right here.
- 399 is now owned by Capitol Angus, TX and Reverse Rocking Ranch, NM and was one of our high selling lots in the 2020 Female Sale.
- **Due 2/2/2022.**

SIRE	CED	BW	WW	YW	MILK	MRB	RE	\$M	\$B	\$C
6	0.2	76	142	27	1.09	0.95	75	183	312	
DAM	CED	BW	WW	YW	MILK	MRB	RE	\$M	\$B	\$C
13	-0.5	54	105	27	1.21	0.55	68	186	309	



Woodhill Relevance Sire of Lot 2



Poss Deadwood Maternal Brother to Lot 2

An elite mating from the dam of Deadwood!

Lot
3

Poss Ellunamere 5535 ET

COW | REG: 18348409 | DOB: 03/05/15 | TAT: 5535 ANGUSGS



Haynes Papa 0100 Service Sire

Poss Total Impact 745
Poss Easy Impact 0119
 Poss Elmaretta 736

G A R Predestined
Poss Ellunamere 0170
 Poss Ellunamere 204

TC Total 410
 Poss Blackcap 5116
 Hyline Right Time 338
 Poss Elmaretta 025
 B/R New Design 036
 G A R Ext 4206
 Connealy Forefront
 Poss Ellunamere 014

CED	BW	WW	YW	SC	HP	CEM	MILK
8	-1.3	50	84	1.17	15.2	10	22
CW	MARB	RE	\$M	\$F	\$G	\$B	\$C
38	0.90	0.60	70	85	60	144	257

- 5535 ranks in the top 25% for 10 different EPDS or \$values.
- A full sister to the dam of Poss Deadwood, the \$900,000 high seller in our 2021 Bull Sale.
- Her sire, Poss Easy Impact, has sired some of the most progressive genetics in the breed including Baldrige Alternative and the dam's of Poss Rawhide and Poss Deadwood. His progeny ratios are currently at 99 BWR, 106 WWR, 104 YWR, 105 Marbling and 101 RE. He has 32 daughters at 101 NR. Also a go-to sire for PAP performance.
- Good female here who has stood the test of time and Scotia hills!
- **Sells bred to Haynes Papa 0100 due with a heifer calf 2/18/2022.**

Lot
3A

Poss Ellunamere 714

COW | REG: 18958077 | DOB: 01/28/17 | TAT: 714 ANGUSGS

EF Commando 1366
Baldrige Compass C041
 Baldrige Isabel Y69

Poss Easy Impact 0119
Poss Ellunamere 5535
 Poss Ellunamere 0170

EF Complement 8088
 Riverbend Young Lucy W1470
 Styles Upgrade J59
 Baldrige Isabel T935
 Poss Total Impact 745
 Poss Elmaretta 736
 G A R Predestined
 Poss Ellunamere 204

CED	BW	WW	YW	SC	HP	CEM	MILK
13	-2.5	55	96	0.59	14.0	6	36
CW	MARB	RE	\$M	\$F	\$G	\$B	\$C
38	1.00	0.55	79	81	61	143	264

- 714 ranks in the top 25% for 12 different EPDS or \$values including top 10% for marbling and \$C.
- Her sire, Baldrige Compass, has been the featured herd sire for years at Poss Angus for good reason. He athletically leaves piles of good calves every year. Excellent ratios of BW 99, WW 100, YW 101, Marbling 108, RE 101 and 172 daughters at 103 NR. He is a direct son of the great Baldrige Isabel Y69.
- 714 combines some great cow families in her lineage and could be a donor prospect for many.
- **Sells bred to Haynes Papa 0100 due with a heifer calf 2/17/2022.**



Baldrige Compass C041 Sire of Lot 3A



W
D
Feature Lots

POSS ANGUS FALL FEMALE SALE

Lot
4A

Poss Pride 0604 ET

COW | REG: 19776430 | DOB: 01/12/20 | TAT: 0604 ANGUSGS



Connealy Confidence 0100
Connealy Confidence Plus
Elbanna of Conanga 1209

Poss Hoover Dam 2509
Poss Pride 5163
Poss Pride 9526

Connealy Tobin
Becka Gala of Conanga 8281
Connealy Consensus
Elbasta of Conanga 9703
Hoover Dam
Poss Erica 793
G A R Predestined
Baldrige Pride R600

CED	BW	WW	YW	SC	HP	CEM	MILK
12	0.7	82	150	0.48	13.7	8	32
CW	MARB	RE	\$M	\$F	\$G	\$B	\$C
71	1.07	1.01	91	121	72	192	340

- 0604 ranks in the top 25% for 17 different EPDS or \$values including top 1% for \$C and \$W.
- The only female in the breed for her combination of CED, YW, Claw, Marb, RE, \$C.
- Excellent female here with an elite EPD profile and balance. She combines lineages that have dominated the performance landscape in recent times.
- Sired by Connealy Confidence Plus out of the \$50,000 dam of Poss Maverick, the price discovery in the open market on those two sires speaks for itself.
- 0604 is, without question, a donor prospect that will bring proven genetics in a progressive communication of her performance on paper.
- **Selling half interest.**
- **Sells bred to Poss Deadwood with a bull calf due 1/22/2022.**

Lot
4B

Poss Pride 0623 ET

COW | REG: 19776431 | DOB: 01/21/20 | TAT: 0623 ANGUSGS



Connealy Confidence 0100
Connealy Confidence Plus
Elbanna of Conanga 1209

Poss Hoover Dam 2509
Poss Pride 5163
Poss Pride 9526

Connealy Tobin
Becka Gala of Conanga 8281
Connealy Consensus
Elbasta of Conanga 9703
Hoover Dam
Poss Erica 793
G A R Predestined
Baldrige Pride R600

CED	BW	WW	YW	SC	HP	CEM	MILK
2	2.4	72	129	0.42	18.8	5	36
CW	MARB	RE	\$M	\$F	\$G	\$B	\$C
63	1.15	1.06	95	112	78	190	341

- 0623 ranks in the top 25% for 15 different EPDS or \$values including top 1% \$M and \$C and top 2% for HP.
- The only female in the breed for her combination of YH, HP, Marbling, RE, \$M, \$C and SC.
- Full sister to Lot 4A and, without question, a donor prospect. Excellent \$B to \$C spread that sows great balance for the progressive and maternal traits.
- Her dam was the \$50,000 top seller of our 2020 Female Sale to Point Pleasant Angus, TN-VA. 5163 recently went on to influence the record setting \$225,000 Poss Maverick son in Australia and she is the balance of power and marbling that Poss Maverick is known for.
- **Selling half interest with the option to double to full ownership.**
- **Sells bred to Poss Rawhide with a heifer calf due 1/22/2022.**

Lot
4C

Connealy Clarity x Poss Pride 5163

HEIFER PREGNANCY DUE 2/1/22



Poss Pride 5163 Dam of Lots 4A-4C



Poss Maverick Maternal Brother to Lots 4A-4C

Cherry Creek Land Grant
Connealy Clarity
Breshie of Conanga 6988

Poss Hoover Dam 2509
Poss Pride 5163
Poss Blueblood 920

K C F Bennett Homestead
Cherry Crk Eva B27 M
Connealy Confidence Plus
Brelly of Conanga 367
Hoover Dam
Poss Erica 793
G A R Predestined
Baldrige Pride R600

DAM SIRE	CED	BW	WW	YW	MILK	MRB	RE	\$M	\$B	\$C
	10	0.8	79	149	23	1.08	1.00	99	209	370
DAM SIRE	CED	BW	WW	YW	MILK	MRB	RE	\$M	\$B	\$C
	3	3.2	69	122	33	1.08	0.74	82	194	334

- At six years of age, 5163 ranks in the top 25% of the breed for an incredible 18 different EPDS or \$values, including top 1% for \$C, \$B and \$F, top 2% for CW and top 4% for \$M.
- 5163 is the oldest female with her combination of \$C, \$B, \$M, Marbling, RE and HP.
- The deceased sire of this pregnancy is in the top 25% for 18 different EPDS or \$values including top 1% for \$C, \$B, \$F, \$M, RADG and Docility.
- What an exciting mating this will be with great promise of pedigree flexibility, marbling and many maternal traits - put your prefix on a donor prospect here!
- **Due 2/1/2022.**

Lot
5A

Poss Elmaretta 1528 ET

COW | REG: 20057692 | DOB: 01/22/21 | TAT: 1528 **ANGUS**GS

G A R Ashland
G A R Home Town
Chair Rock Sure Fire 6095

Connealy Power Play
Poss Elmaretta 648
Poss Elmaretta 9104

G A R Early Bird
Chair Rock Ambush 1018
G A R Sure Fire
Chair Rock Progress 3005
MCATL Triple Stack
Boka Gena of Conanga 783
Connealy All Around
Poss Elmaretta 227



CED	BW	WW	YW	SC	HP	CEM	MILK
12	0.7	79	138	0.63	14.8	12	21
CW	MARB	RE	\$M	\$F	\$G	\$B	\$C
69	0.99	0.86	80	118	71	189	325

- 1528 ranks in the top 25% for an incredible 22 different EPDS or \$values including top 1% \$C.
- Her dam has been a dominant female in our annual bull sales, where her son, Poss Wrangler, sold to Alta Genetics in 2020 and Poss Valley sold for \$62,000 to Grimmus Cattle Co, CA in 2021.
- 1528 is a member of one of the best flushes on the ground in 2021. The combination of her progressive sire, G A R Hometown, and the pure power and longevity of 648 makes 1528 one of the elite heifers in the country and this offering.
- Complimentary breeding has brought about this unique genetic piece that will add a new cow family to every program in the country with an EPD profile that represents this excellent donor prospect.
- A sale favorite!



Poss Elmaretta 648 Dam of Lots 5A-5C

Lot
5B

Poss Rawhide x Poss Elmaretta 648

HEIFER PREGNANCY DUE 2/1/22

Poss Maverick
Poss Rawhide
Poss Blueblood 6502

Connealy Power Play
Poss Elmaretta 648
Poss Elmaretta 9104

Basin Payweight 1682
Poss Pride 5163
Poss Easy Impact 0119
Poss Blueblood 920
MCATL Triple Stack
Boka Gena of Conanga 783
Connealy All Around
Poss Elmaretta 227

DAM SIRE	CED	BW	WW	YW	MILK	MRB	RE	\$M	\$B	\$C
	11	-0.4	75	130	27	1.09	0.81	82	191	330
DAM SIRE	CED	BW	WW	YW	MILK	MRB	RE	\$M	\$B	\$C
	4	2.3	78	126	19	0.45	0.32	75	129	242

- This heifer pregnancy lines up the current two best females, Poss Elmaretta 648 and the lot 1 female of this offering, Poss Blueblood 6502.
- Poss Rawhide continues to drive value in moderation with calving ease and elite end-product merit in a package that will maintain itself anywhere in the country. Rawhide is also one of the few sires who maintains a high \$C and elite PAP percentile and an excellent EPD balance with 19 EPDS or \$values in the top 25%.
- One of the best matings we have ever done and a sleeper in this offering.
- **Due 2/1/2022.**



Poss Rawhide Sire of Lot 5B



Poss Valley Maternal Brother of Lot 5A-5C

Lot
5C

Connealy Clarity x Poss Elmaretta 648

HEIFER PREGNANCY DUE 2/1/22

Cherry Creek Land Grant
Connealy Clarity
Breshie of Conanga 6988

Connealy Power Play
Poss Elmaretta 648
Poss Elmaretta 9104

K C F Bennett Homestead
Cherry Crk Eva B27 M
Connealy Confidence Plus
Brelly of Conanga 367
MCATL Triple Stack
Boka Gena of Conanga 783
Connealy All Around
Poss Elmaretta 227

DAM SIRE	CED	BW	WW	YW	MILK	MRB	RE	\$M	\$B	\$C
	10	0.8	79	149	23	1.08	1.00	99	209	370
DAM SIRE	CED	BW	WW	YW	MILK	MRB	RE	\$M	\$B	\$C
	4	2.3	78	126	19	0.45	0.32	75	129	242

- Excellent opportunity to own a female that quite possibly will have a full brother be a bull sale topper. 648 can bring the herd sires and Connealy Clarity looks to be siring long-made, ranch type bulls that can cover some ground.
- Great opportunity on a building block female that you can put your prefix on for future serious bull prospects out of her.
- **Due 2/1/2022.**

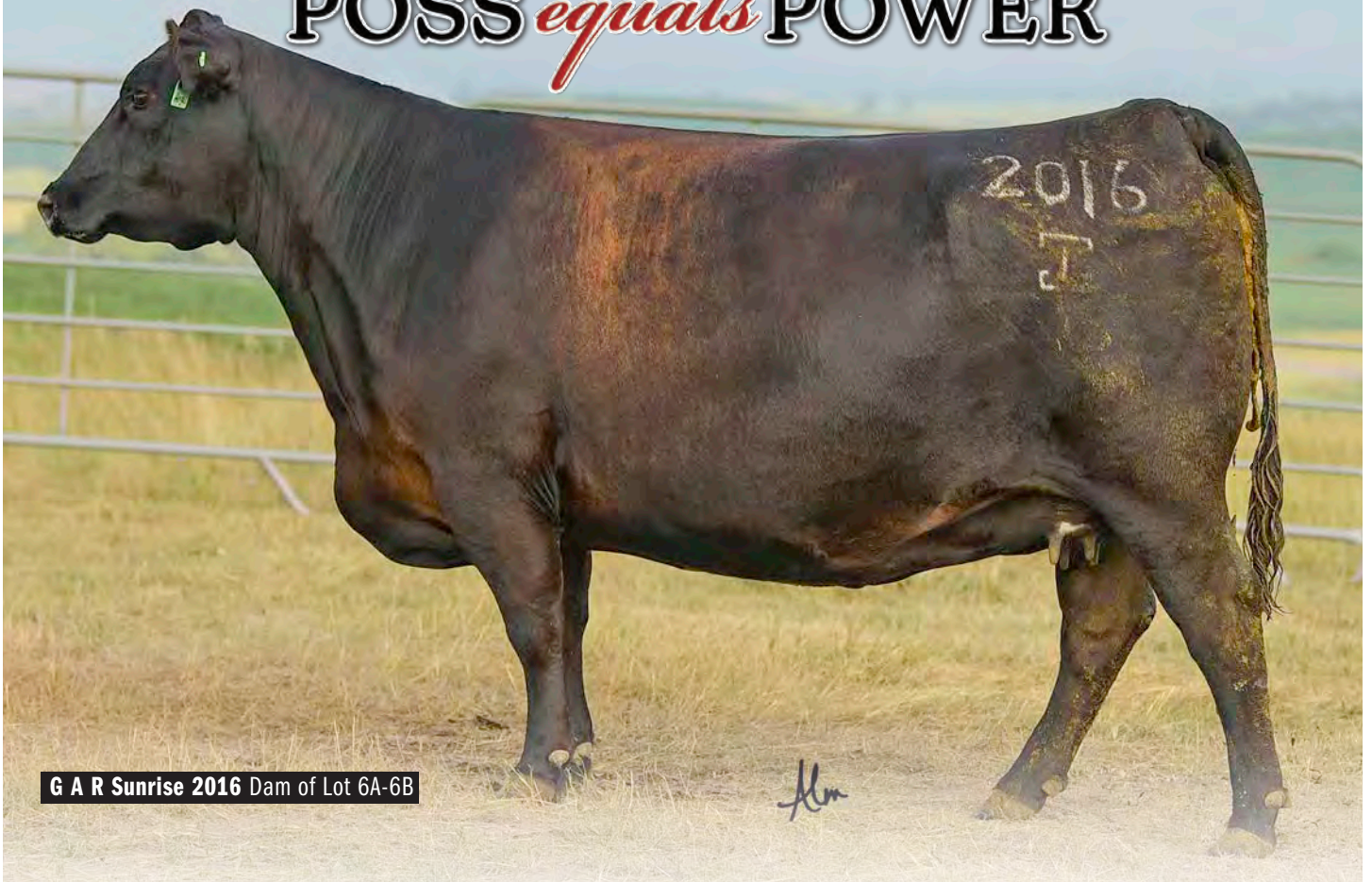


Connealy Clarity Sire of Lot 5C



Poss Wrangler Maternal Brother of Lots 5A-5C

POSS *equals* POWER



G A R Sunrise 2016 Dam of Lot 6A-6B

Alm

Lot 6A

Poss Blackcap 1909 ET

COW | REG: 20101210 | DOB: 08/06/21 | TAT: 1909

Poss Maverick
Poss Rawhide
Poss Blueblood 6502v

G A R Sunrise
G A R Sunrise 2016
G A R Ingenuity 3132

Basin Payweight 1682
Poss Pride 5163
Poss Easy Impact 0119
Poss Blueblood 920
MCC Daybreak
G A R Objective R227
G A R Ingenuity
G A R 28 Ambush N340

CED	BW	WW	YW	SC	HP	CEM	MILK
13	-1.0	71	125	0.70	14.4	11	27
CW	MARB	RE	\$M	\$F	\$G	\$B	\$C
58	1.28	0.88	83	109	81	189	328

- Sells at the side of her recip cow.
- 1909 has interim EPDS currently but should be updated prior to the sale.
- Her dam is one of the good phenotype females at Poss Angus with tremendous embryo production.
- Her sire was the \$140,000 top selling bull of our 2020 bull sale selling to ST Genetics. He will be one of the great sires of the breed over the next couple years. His dam sells as lot 1 in this offering.
- A sleeper in this offering, 1909 adds great promise for a female who can become a foundational piece for any program.

Lot 6B

Poss Deadwood x G A R Sunrise 2016

HEIFER PREGNANCY DUE 1/13/22

Poss Maverick
Poss Deadwood
Poss Ellunamere 399

G A R Sunrise
G A R Sunrise 2016
G A R Ingenuity 3132

Basin Payweight 1682
Poss Pride 5163
Poss Easy Impact 0119
Poss Ellunmere 0170
MCC Daybreak
G A R Objective R227
G A R Ingenuity
G A R 28 Ambush N340

DAM SIRE	CED	BW	WW	YW	MILK	MRB	RE	\$M	\$B	\$C
13	-0.1	80	145	27	1.82	0.96	75	244	391	
14	-1.5	67	119	27	1.46	0.94	84	186	325	

- 2016 is one of the unique females in the breed with a dominant phenotype and EPD profile.
- Ranks in the top 25% for an incredible 20 different EPDS or \$values including top 1% PAP, Marbling, \$B, \$G and \$C.
- The ability to cross Deadwood on 2016 will bring a new level of potential performance cattle that will marble, maintain and thrive in the toughest parts of the country.
- 2016 will be the centerpiece of our donor battery in 2021-2022.
- **Due 1/13/2022.**

The 2016 cow will be the centerpiece of our donor battery this year!

Lot 7

Baldrige Pappy x Poss Elmaretta 8639

HEIFER PREGNANCY DUE 2/1/22

Hoover No Doubt
Baldrige Pappy
 Baldrige Isabel B061

 Baldrige Compass C041
Poss Elmaretta 8639
 Poss Elmaretta 924

Mogck Bullseye
 Miss Blackcap Ellston J2
 G A R Prophet
 Baldrige Isabel Y69
 EF Commando 1366
 Baldrige Isabel Y69
 Poss Total Impact 745
 Poss Elmaretta 736

DAM	SIRE	CED	BW	WW	YW	MILK	MRB	RE	\$M	\$B	\$C
		9	1.3	81	144	24	1.19	0.91	85	184	324
DAM	SIRE	CED	BW	WW	YW	MILK	MRB	RE	\$M	\$B	\$C
		6	1.3	78	125	25	0.92	0.88	92	163	303

- 8639 ranks in the top 25% for 16 different EPDS or \$values including top 1% for \$C and \$M and top 2% for both foot scores.
- She recorded excellent ratios on her first calf of 104 WWR, 103 YWR, 139 Marbling and 101 RE.
- Baldrige Pappy, the \$110,000 top seller for Baldrige Performance Angus, ranks in the top 25% for 18 different EPDS or \$values. Phenotypically, the Pappys look to be one of the dominant sire groups in the country for phenotype. Many consider Pappy to be the premier calving ease son of Hoover No Doubt.
- **Due 2/1/2022.**



Baldrige Pappy Sire of Lot 7



Baldrige Compass C041
 Maternal Grand Sire of Lot 7

Lot 8

Poss Deadwood x Poss Rita 9516

HEIFER PREGNANCY DUE 1/29/22

Poss Maverick
Poss Deadwood
 Poss Ellunamere 399

 Hoover No Doubt
Poss Rita 9516
 Poss Rita 528

Basin Payweight 1682
 Poss Pride 5163
 Poss Easy Impact 0119
 Poss Ellunamere 0170
 Mogck Bullseye
 Miss Blackcap Ellston J2
 Connealy Uptown 098E
 Rita 0C7 of 5M1 Credence

DAM	SIRE	CED	BW	WW	YW	MILK	MRB	RE	\$M	\$B	\$C
		13	-0.1	80	145	27	1.82	0.96	75	244	391
DAM	SIRE	CED	BW	WW	YW	MILK	MRB	RE	\$M	\$B	\$C
		-4	4.8	85	148	23	0.96	0.68	79	181	314

- 9516 ranks in the top 25% for 15 different EPDS or \$values including top 1% for Docility.
- Her dam, Poss Rita 528, has been one of the good donors for us.
- 9516 is classic in her depth of body and power for a No Doubt daughter.
- Poss Deadwood will make an ideal genetic choice with his combination of calving ease, elite end-product merit, and long made structure.
- New, young and fresh genetics here with pedigree diversity and genetic promise!
- **Due 1/29/2022.**



Poss Deadwood Sire of Lots 6, 8, 9



Poss Long Range 0684
 3/4 Brother to Dam of Lot 8

Lot 9

Poss Deadwood x Poss Ellunamere 905

HEIFER PREGNANCY DUE 2/1/22

Poss Maverick
Poss Deadwood
 Poss Ellunamere 399

 Connealy Mainstay
Poss Ellunamere 905
 Poss Ellunamere 7148

Basin Payweight 1682
 Poss Pride 5163
 Poss Easy Impact 0119
 Poss Ellunamere 0170
 Connealy Glory 4127
 Jayce of Conanga 318E
 Baldrige Compass C041
 Poss Ellunamere 5507

DAM	SIRE	CED	BW	WW	YW	MILK	MRB	RE	\$M	\$B	\$C
		13	-0.1	80	145	27	1.82	0.96	75	244	391
DAM	SIRE	CED	BW	WW	YW	MILK	MRB	RE	\$M	\$B	\$C
		6	0.6	82	136	26	0.77	0.50	77	147	268

- 905 is a beautifully made daughter of Connealy Mainstay, a bull who has sired some of the real attractive cattle across the country. Strong maternal line of genetics here crossed to one of the most desired bulls in the history of the breed.
- 905 posted a 130 Individual WWR!
- **Due 2/1/2022.**



Poss Ellunamere 5507 Great Granddam of Lot 9



Connealy Mainstay
 Maternal Grand Sire of Lot 9

Fall Open Heifers

Lot 10

Poss Erica 0907 ET

COW | REG: 19857412 | DOB: 08/27/20 | TAT: 0907 **ANGUSGS**

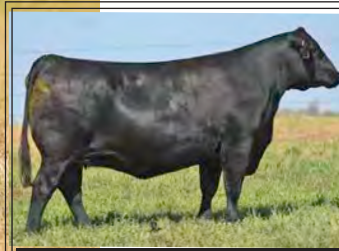


Mogck Bullseye
Hoover No Doubt
Miss Blackcap Ellston J2

K C F Bennett Fortress
Poss Erica 705
Poss Erica 5118

Mogck Sure Shot
Mogck Mary 1255
SydGen C C & 7
Miss Blackcap Ellston D154
Connealy Consensus
Thomas Patricia 9705
Poss Element 215
Poss Erica 1518

CED	BW	WW	YW	SC	HP	CEM	MILK
12	-1.6	73	131	1.04	17.1	15	23
CW	MARB	RE	\$M	\$F	\$G	\$B	\$C
58	1.19	0.75	89	107	70	177	319



Poss Erica 705 Dam of Lot 10

- Ranks in the top 25% for 15 different EPDS or \$values including top 2% \$C.
- 0907 posts a rare -1.6 BW to 131 YW spread for a daughter of Hoover No Doubt. Her calving ease brings many options on sire matings.
- Excellent cow line right out of our ET program from a very productive donor dam.
- Donor potential here from the fall replacements.

Lot 11

Poss Rita 0738

COW | REG: 19857397 | DOB: 09/04/20 | TAT: 0738 **ANGUSGS**



Basin Payweight 1682
Poss Maverick
Poss Pride 5163

Connealy In Focus 4925
Poss Rita 4150
POSS Rita 0507

Basin Payweight 006S
21AR O Lass 7017
Poss Hoover Dam 2509
Poss Pride 9526
Mytty In Focus
Black Cana of Conanga 206
ALC Big Eye D09N
G A R Objective 2425

CED	BW	WW	YW	SC	HP	CEM	MILK
0	2.9	74	126	1.09	15.7	4	34
CW	MARB	RE	\$M	\$F	\$G	\$B	\$C
59	1.04	1.20	76	108	75	183	313



Poss Maverick Sire of Lot 11

- Ranks in the top 25% for 16 different EPDS or \$values including top 1% RE and 2% \$C.
- 0738 performs the challenging feat of posting both Marbling and RE EPDs over 1.0.
- Her sire, Poss Maverick, is rewriting the genetic marketplace for desired phenotype and EPD profiles. His ability to maintain body condition in his progeny while pushing the top end of marbling and RE is very rare and valuable.

Lot 12

Poss Erica 0741

ANGUSGS

COW | REG: 19857399 | DOB: 09/06/20 | TAT: 0741

Basin Payweight 1682
Poss Maverick
Poss Pride 5163

JMB Traction 292
Poss Erica 5719
Poss Erica 017

Basin Payweight 006S
21AR O Lass 7017
Poss Hoover Dam 2509
Poss Pride 9526
Sitz Top Game 561X
JMB Emulota 013
Connealy All Around
Poss Ideal 7616

CED	BW	WW	YW	SC	HP	CEM	MILK
-4	3.6	87	148	0.24	13.2	5	27
CW	MARB	RE	\$M	\$F	\$G	\$B	\$C
77	0.76	1.02	57	129	61	190	303

- Records 14 different EPDS or \$values in the top 25% of the breed.
- Great EPD balance with classic soggy Maverick phenotype that will add to any replacement pen.

Lot 13

Poss Blackcap 0786

ANGUSGS

COW | REG: 20072534 | DOB: 09/29/20 | TAT: 0786

EB Teddy
Poss Yogi
STF Rita B405

Connealy Uptown 098E
Poss Blackcap 6159
Poss Blackcap 2515

S A V Resource 1441
MW Black Power 304
A A R Ten X 7008 S A
STF Rita Y105
Sitz Upward 307R
Jace of Conanga 4660 818N
G A R Predestined
Poss Blackcap 5116

CED	BW	WW	YW	SC	HP	CEM	MILK
9	0.5	77	139	0.43	18.9	11	30
CW	MARB	RE	\$M	\$F	\$G	\$B	\$C
55	0.91	0.60	76	95	63	159	282

- Ranks in the top 25% for an incredible 20 different EPDS or \$values.
- Unique in her top 1% PAP prediction with top 10% WW and YW growth.

Spring Bred Heifers

Lot 14

Poss Elmaretta 0169

COW | REG: 19777967 | DOB: 02/21/20 | TAT: 0169 ANGUSGS

Basin Payweight 1682
Poss Maverick
 Poss Pride 5163

 Poss Element 215
Poss Elmaretta 7104
 Poss Elmaretta 146

Basin Payweight 006S
 21AR O Lass 7017
 Poss Hoover Dam 2509
 Poss Pride 9526
 Poss Easy Impact 0119
 Poss Erica 004
 Mytty In Focus
 Poss Elmaretta 8510

CED	BW	WW	YW	SC	HP	CEM	MILK
2	2.1	85	154	1.14	16.4	5	32
CW	MARB	RE	\$M	\$F	\$G	\$B	\$C
73	1.30	0.79	72	124	76	201	333

- Ranks in the top 25% for 16 different EPDS or \$values including top 1% \$C and \$B.
- Big EPD profile here on an excellent bred heifer.
- **Sells bred to Sitz Resilient 10208 due 2/13/2022.**



Sitz Resilient 10208 Service Sire



Lot 15

Poss Erica 037

COW | REG: 19778010 | DOB: 01/31/20 | TAT: 037 ANGUSGS

SydGen Enhance
MOGCK Amplify
 Mogck High Rise 1105

 TEX Playbook 5437
Poss Erica 8122
 Poss Erica 5146

SydGen Exceed 3223
 SydGen Rita 2618
 Mogck Bullseye
 Mogck High Rise 1680
 Basin Payweight 1682
 Rita 1C43 of 9M26 Complete
 Connealy Black Granite
 Poss Erica 186

CED	BW	WW	YW	SC	HP	CEM	MILK
8	1.5	81	146	0.68	12.7	9	30
CW	MARB	RE	\$M	\$F	\$G	\$B	\$C
69	0.94	0.79	80	119	67	186	321

- Ranks in the top 25% for 17 different EPDS or \$values including top 1% \$C.
- 037 recorded individual ratios of 119 for WW and 109 YW.
- **Sells bred to Poss Rawhide with a heifer calf due 1/24/2022.**



MOGCK Amplify Sire of Lot 15



Welcome from CK6 Consulting



Matthew 6:19-21

Family ... a group of one or more parents and their children living together as a unit.

A great word and definition that is found in Scotia, NE. A family holds together in great or troubling times. The Poss name has become synonymous with progressive genetics bred and managed in a real-world environment. Those genetics have gone on to reshape many of the approaches to the marketplace for value and performance. They have just begun, as you can tell by many of the lots in this offering and their ability to bring options and price discovery to Poss customers.

Some of the elite, most sought-after sires in the Angus breed carry the Poss prefix. That is exciting and challenging as your life's work gets used and judged across the country. Many of these sires and others are represented as the next generation calves in this offering. I would not only take a look at the females but also their service sire and fetal sex potential of the coming calf. Time and marketing options will be on your side as these females grow into pairs. These calves on the ground in 2022 could be as good of calves as this program has ever bred.

As I have often said about the character and integrity of this program and our clients, I publicly give my highest approval. I will fight for the genuine efforts of our clients against all the commentators because our word in this business is really where all programs succeed or fail. That is how it should be. The Poss program and family have and are putting the hard work into service, breeding and family. If I can be of any assistance on this offering, please feel free to contact me.

Chris Earl 630-675-6559 — Wes Tiemann 816-244-4462

God Bless! Chris Earl

Lot
16

Poss Erica 0678 ET

COW | REG: 19738411 | DOB: 02/11/20 | TAT: 678 **ANGUSGS**



SydGen Enhance
MOGCK Amplify
Mogck High Rise 1105

KM Broken Bow 002
Poss Erica 327
Poss Erica 1203

SydGen Exceed 3223
SydGen Rita 2618
Mogck Bullseye
Mogck High Rise 1680
Summitcrest Complete 1P55
Summitcrest Princess 0P12
Connealy Impression 5549
Poss Erica 853

CED	BW	WW	YW	SC	HP	CEM	MILK
4	3.1	87	153	1.46	16.9	9	18
CW	MARB	RE	\$M	\$F	\$G	\$B	\$C
70	0.58	0.83	78	116	52	169	297



Poss Erica 327 Dam of Lot 16

- Ranks in the top 25% for 17 different EPDS or \$values.
- Maternal sister to Poss Achievement, owned by Sitz Angus and ABS.
- **Sells bred to Poss Deadwood with a heifer calf due 2/13/2022.**

Lot
17

Poss Protet 0323

COW | REG: 20072964 | DOB: 03/22/20 | TAT: 0323 **ANGUSGS**



HA Cowboy Up 5405
Mohnen Tuff 18
S A V Madame Pride 5290

Plattemere Weigh Up K360
Beck Protet 6011
Mead Protet L306

HA Outside 3008
HA Blackcap Lady 1602
S A V 8180 Traveler 004
S A V Madame Pride 0075
Sitz Upward 307R
Barbara of Plattemere 337
K C F Bennett Performer
MAF Protet E068

CED	BW	WW	YW	SC	HP	CEM	MILK
3	3.2	71	120	0.43	11.1	6	31
CW	MARB	RE	\$M	\$F	\$G	\$B	\$C
52	0.82	0.20	58	89	51	140	240

- Recorded 108 WWR and 102 YWR.
- **AI bred 5/3/2021 to Poss Rawhide. Pasture exposed to Connealy Cadillac and Pine View Premium from 5/5/2021 to 5/30/2021. Confirmed bred and due 2/19/2022.**

Poss Amplify 952 Maternal Brother of Lot 17

Lot
18

Poss Blueblood Lady 0135

COW | REG: 19777947 | DOB: 02/18/20 | TAT: 0135 **ANGUSGS**



Basin Payweight 1682
Poss Maverick
Poss Pride 5163

V A R Discovery 2240
Poss Blueblood Lady 7611
Poss Blueblood Lady 9113

Basin Payweight 006S
21AR O Lass 7017
Poss Hoover Dam 2509
Poss Pride 9526
A A R Ten X 7008 S A
Deer Valley Rita 0308
Connealy Kaboom 380
Poss Blueblood Lady 713

CED	BW	WW	YW	SC	HP	CEM	MILK
6	0.5	69	131	1.93	14.6	9	36
CW	MARB	RE	\$M	\$F	\$G	\$B	\$C
58	1.03	0.83	55	112	71	183	292

- Granddam is a featured female at Cline Angus.
- **Sells bred to Sitz Resilient 10208 with a heifer calf due 1/19/2022.**

Spring Bred Cows

Lot 19

Poss Chloe 9178

COW | REG: 19499312 | DOB: 02/23/19 | TAT: 9178 ANGUSGS

KM Broken Bow 002
Spring Cove Reno 4021
 Spring Cove Liza 021

Jindra Acclaim

M K Chloe 706
 M K Chloe 511

Summitcrest Complete 1P55
 Summitcrest Princess 0P12
 C C A Emblazon 702
 Spring Cove Liza 721
 Jindra 3rd Dimension
 Jindra Blackbird Lassy 1111
 Connealy Capitalist 028
 M K Chloe 312

CED	BW	WW	YW	SC	HP	CEM	MILK
1	2.9	98	173	1.28	20.1	7	26
CW	MARB	RE	\$M	\$F	\$G	\$B	\$C
83	0.71	0.68	70	125	57	182	306

- Ranks in the top 25% for 17 different EPDS or \$values including top 1% CW, HP, WW and YW.
- 9178 recorded an individual ratio of 116 for WW and has some of the biggest growth EPDS in the entire offering.
- **Sells bred to G A R Home Town with a heifer due 2/5/2022.**



M K Chloe 706 Dam of Lot 19



Lot 20

Poss Pride 907

COW | REG: 19487508 | DOB: 01/24/19 | TAT: 907 ANGUSGS

Poss Lasting Impact 3118
Poss Achievement
 Poss Erica 327

KR Cash 3839

Poss Pride 7115
 Poss Pride 5136

Poss Easy Impact 0119
 Poss Blackbird 005
 KM Broken Bow 002
 Poss Erica 1203
 Barstow Cash
 WK Primrose Lady 1834
 Connealy Uptown 098E
 Poss Pride 2190

CED	BW	WW	YW	SC	HP	CEM	MILK
10	0.0	69	127	0.78	16.4	18	18
CW	MARB	RE	\$M	\$F	\$G	\$B	\$C
56	0.85	0.81	80	108	62	170	300

- Ranks in the top 25% for 18 different EPDS or \$values.
- Beautiful Poss Achievement daughter here who is classic in her strong, maternal, angular look
- **Sells bred to Poss Progressive with a heifer calf due 2/7/2022.**



Poss Progressive Service Sire



Lot 21

Poss Erica 941

COW | REG: 19812076 | DOB: 02/03/19 | TAT: 941 ANGUSGS

Poss Lasting Impact 3118
Poss Achievement
 Poss Erica 327

JMB Traction 292

Poss Erica 7273
 Poss Erica 226

Poss Easy Impact 0119
 Poss Blackbird 005
 KM Broken Bow 002
 Poss Erica 1203
 Sitz Top Game 561X
 JMB Emulota 013
 SydGen Mandate 6079
 Poss Erica 036

CED	BW	WW	YW	SC	HP	CEM	MILK
11	-0.6	68	133	0.55	11.2	11	30
CW	MARB	RE	\$M	\$F	\$G	\$B	\$C
45	0.74	0.54	61	92	53	145	249

- Ranks in the top 25% of the breed for 8 EPDS or \$values.
- **Sells bred to Sitz Resilient 10208 with a heifer calf due 2/4/2022.**



Poss Achievement Sire of Lot 20-21

Lot 22A

Poss Blackbird 9143

COW | REG: 19513856 | DOB: 02/19/19 | TAT: 9143 **ANGUSGS**



Connealy Glory 4127
Connealy Mainstay
 Jayce of Conanga 318E

MAF Resolution 2326
Poss Blackbird 5162
 Poss Blackbird 154

Connealy Consensus
 Enchant of Conanga 2423
 Connealy Hemisphere 957L
 Jase of Conanga 4660
 Connealy Final Solution
 B M Eileen 2114
 Poss Total Impact 745
 Poss Blackbird 9539

CED	BW	WW	YW	SC	HP	CEM	MILK
8	-0.4	62	115	0.62	15.4	5	29
CW	MARB	RE	\$M	\$F	\$G	\$B	\$C
39	0.72	0.79	74	84	60	144	261



Sitz Resilient 10208 Service Sire

- 9143 is full sister to lot 22B.
- Ranks in the top 25% of the breed for 8 EPDS or \$values.
- **Sells bred to Sitz Resilient 10208 with a heifer calf due 2/4/2022.**

Lot 22B

Poss Blackbird 9144 **ANGUSGS**

COW | REG: 19653193 | DOB: 02/19/19 | TAT: 9144

Connealy Glory 4127
Connealy Mainstay
 Jayce of Conanga 318E

MAF Resolution 2326
Poss Blackbird 5162
 Poss Blackbird 154

Connealy Consensus
 Enchant of Conanga 2423
 Connealy Hemisphere 957L
 Jase of Conanga 4660
 Connealy Final Solution
 B M Eileen 2114
 Poss Total Impact 745
 Poss Blackbird 9539

CED	BW	WW	YW	SC	HP	CEM	MILK
8	-0.4	62	115	0.62	15.3	5	29
CW	MARB	RE	\$M	\$F	\$G	\$B	\$C
39	0.72	0.78	74	84	60	144	261

- 9144 is full sister to lot 22A.
- **Sells bred to Haynes Papa 0100 with a heifer calf due 2/3/2022.**

Lot 23

Poss Ellunamere 9102 **ANGUSGS**

COW | REG: 19525519 | DOB: 02/14/19 | TAT: 9102

EF Commando 1366
Baldrige Compass C041
 Baldrige Isabel Y69

Poss Lasting Impact 3118
Poss Ellunamere 7182
 Poss Ellunamere 367

EF Complement 8088
 Riverbend Young Lucy W1470
 Styles Upgrade J59
 Baldrige Isabel T935
 Poss Easy Impact 0119
 Poss Blackbird 005
 Connealy Consensus 7229
 Poss Ellunamere 4501

CED	BW	WW	YW	SC	HP	CEM	MILK
5	1.9	63	120	0.80	13.3	6	37
CW	MARB	RE	\$M	\$F	\$G	\$B	\$C
54	0.83	0.67	63	106	61	166	278

- Ranks in top 25% for 12 different EPDS or \$values.
- **Sells bred to Haynes Papa 0100 with a heifer calf due 2/2/2022.**

Lot 24

Poss Blackcap 8613 ET

COW | REG: 19214617 | DOB: 03/08/18 | TAT: 8613 **ANGUSGS**



Basin Payweight 006S
Basin Payweight 1682
 21AR O Lass 7017

V A R Discovery 2240
Vintage Blackcap 5194
 7L Blackcap 9324

Vermilion Payweight J847
 Basin Lucy 3829
 HARB Pendleton 765 J H
 21AR O Lass F24A
 A A R Ten X 7008 S A
 Deer Valley Rita 0308
 Connealy Forward
 Tehama Blackcap P846

CED	BW	WW	YW	SC	HP	CEM	MILK
3	1.5	82	144	1.36	16.1	10	28
CW	MARB	RE	\$M	\$F	\$G	\$B	\$C
59	0.63	0.35	82	100	44	143	267



Vintage Blackcap 5194 Dam of Lot 24

- Ranks in the top 25% for 14 different EPDS or \$values including top 1% for \$W, WW and YW.
- 8613 records one calf at 103 WWR and 108 YWR.
- Flush sister to Poss Paymaster, 4th High Selling Bull of our 2019 Sale to Alta Genetics.
- **Sells bred to Baldrige Pappy with a heifer calf due 2/2/2022.**

Lot 25 **Poss Forever Lady 9196** ANGUS^{GS}

COW | REG: 19487510 | DOB: 02/28/19 | TAT: 9196

SydGen Enhance
MOGCK Amplify
Mogck High Rise 1105

JMB Traction 292
Poss Forever Lady 7615
Angus Hill Forever Lady 700

SydGen Exceed 3223
SydGen Rita 2618
Mogck Bullseye
Mogck High Rise 1680
Sitz Top Game 561X
JMB Emulota 013
A A R Ten X 7008 S A
SF Forever Lady 008

CED	BW	WW	YW	SC	HP	CEM	MILK
4	1.4	68	118	1.59	12.7	8	38
CW	MARB	RE	\$M	\$F	\$G	\$B	\$C
59	0.96	0.81	63	98	67	165	277

- Ranks in the top 25% of the breed for 13 different EPDS or \$values.
- **Sells bred to Poss Deadwood due 2/18/2022.**

Lot 26 **Poss Blueblood 919** ANGUS^{GS}

COW | REG: 19510508 | DOB: 01/29/19 | TAT: 919

Jindra Acclaim
Jindra Blackout
Jindra Judy J 1314 3150

Basin Payweight 1682
Poss Blueblood 7502
Poss Blueblood 410

Jindra 3rd Dimension
Jindra Blackbird Lassy 1111
G T Shear Force
Hoff Judy S C 669 1314
Basin Payweight 006S
21AR O Lass 7017
Poss Easy Impact 0119
Poss Blueblood 2135

CED	BW	WW	YW	SC	HP	CEM	MILK
-1	3.9	78	126	0.27	13.1	11	30
CW	MARB	RE	\$M	\$F	\$G	\$B	\$C
67	0.48	0.91	76	109	48	157	280

- Ranks in the top 25% for 12 different EPDS or \$values and traces back to the great Poss Blueblood 410 who sold in our 2020 Female Sale.
- **Sells bred to G A R Home Town due 2/18/2022.**

Lot 27 **Poss Erica 9128**

COW | REG: 19487457 | DOB: 02/18/19 | TAT: 9128 ANGUS^{GS}

Hoover No Doubt
Connealy Long Range
Bunty Lay of Conanga 4930

Poss Easy Impact 0119
Poss Erica 467
Poss Erica 262

Mogck Bullseye
Miss Blackcap Ellston J2
Connealy Greeley
Bunty Lana of Conanga 4102
Poss Total Impact 745
Poss Elmaretta 736
S A V Potential 0205
Poss Erica 5521

CED	BW	WW	YW	SC	HP	CEM	MILK
10	0.6	65	118	1.13	17.3	13	29
CW	MARB	RE	\$M	\$F	\$G	\$B	\$C
52	1.04	0.40	71	98	62	160	279

- Ranks in the top 25% for an excellent 16 different EPDS or \$values.
- Good young female here with a +1 Marbling EPD from the excellent herd sire, Connealy Long Range.
- **Sells bred to Ellingson Rangeland with a heifer calf due 2/1/2022.**



Ellingson Rangeland Service Sire

Lot 28 **Poss Erica 814**

COW | REG: 19107850 | DOB: 01/26/18 | TAT: 814 ANGUS^{GS}

Basin Payweight 1682
TEX Playbook 5437
Rita 1C43 of 9M26 Complete

Poss Element 215
Poss Erica 638
Poss Erica 1180

Basin Payweight 006S
21AR O Lass 7017
Summitcrest Complete 1P55
Rita 9M26 of Rita 5F56 Pred
Poss Easy Impact 0119
Poss Erica 004
Connealy Right Answer 6238
Poss Erica 8111

CED	BW	WW	YW	SC	HP	CEM	MILK
10	1.7	59	107	0.33	16.3	16	29
CW	MARB	RE	\$M	\$F	\$G	\$B	\$C
42	0.33	0.70	98	88	38	126	261

- Ranks in the top 25% for 11 different EPDS or \$values and recorded ratios of 103 WWR and 106 YWR on her first calf.
- **Sells bred to Haynes Papa 0100 with a heifer calf due 1/30/2022.**



Haynes Papa 0100 Service Sire



Great opportunity to put together some females bred to the new sire, Haynes Papa!

Papa ranks in the top 25% for 18 different EPDS or \$values including top 1% for \$C, \$B, \$F, \$M, PAP. No sire matches that combination!

Lot
29

Poss Ellunamere 9629 ET

COW | REG: 19673399 | DOB: 03/03/19 | TAT: 9629 ANGUS^{GS}



Poss Ellunamere 5525 Dam of Lot 29

S A V Resource 1441
EB Teddy
 MW Black Power 304
 Poss Easy Impact 0119
Poss Ellunamere 5525
 Poss Ellunamere 0170

Rito 707 of Ideal 3407 7075
 S A V Blackcap May 4136
 MW Upward 60 of 307R x 88
 MW Ms Black Power 926
 Poss Total Impact 745
 Poss Elmaretta 736
 G A R Predestined
 Poss Ellunamere 204

CED	BW	WW	YW	SC	HP	CEM	MILK
12	0.4	61	106	0.87	16.0	14	25
CW	MARB	RE	\$M	\$F	\$G	\$B	\$C
47	0.83	0.68	75	92	57	149	268

- Dam is a full sister to the dam of Poss Deadwood. She was a sale highlight of our 2019 sale to RCA Angus, NE.
- **Sells bred to Pine View Premium with a heifer calf due 2/3/2022.**

Lot
30

Poss Erica 8213

ANGUS^{GS}

COW | REG: 19177410 | DOB: 03/07/18 | TAT: 8213

Connealy Big Money
Connealy Big Money 293L
 Pressa of Conanga 293L

ALC Big Eye D09N
Poss Erica 1518
 Poss Erica 4602

2 Bar Cash 1723
 Eltrine of Conanga 3832
 Hoover Headliner J32
 Pristine of Conanga 3430
 C A Future Direction 5321
 ALC Hazel L12L
 Bon View New Design 1407
 Poss Ideal 613

CED	BW	WW	YW	SC	HP	CEM	MILK
10	2.0	70	118	1.60	8.2	9	29
CW	MARB	RE	\$M	\$F	\$G	\$B	\$C
46	0.98	0.66	54	75	63	138	233

- Ranks in the top 25% for 13 different EPDS or \$values.
- **Sells bred to Baldrige Pappy with a heifer calf due 2/4/2022.**

Lot
31

Poss Blackcap 8219

ANGUS^{GS}

COW | REG: 19102426 | DOB: 03/08/18 | TAT: 8219

Barstow Cash
KR Cash 3839
 WK Primrose Lady 1834

S A V Priority 7283
Poss Blackcap 5509
 Poss Blackcap 1517

Sitz Dash 10277
 Barstow Queen W16
 Pine Ridge Hammer S322
 Holman Primrose Lady 902
 S A V Final Answer 0035
 S A V Blackcap May 5530
 S A V Net Worth 4200
 Poss Blackcap 5116

CED	BW	WW	YW	SC	HP	CEM	MILK
14	1.7	68	115	0.80	10.9	12	23
CW	MARB	RE	\$M	\$F	\$G	\$B	\$C
55	0.27	0.55	63	103	31	135	238

- Ranks in the top 25% for 12 different EPDS or \$values.
- **Sells bred to Haynes Papa 0100 with a heifer calf due 2/3/2022.**

Lot
32

Poss Lucy 809

COW | REG: 19125314 | DOB: 01/25/18 | TAT: 809 ANGUS^{GS}



Connealy Consensus
K C F Bennett Consent Y75
 K C F Miss Protege W148

Connealy Uptown 098E
Poss Lucy 6125
 Basin Lucy 0840

KMK Alliance 6595 187
 Blinda of Conanga 004
 GAR-EGL Protege
 Breela of Conanga 3991
 Sitz Upward 307R
 Jace of Conanga 4660 818N
 21AR Roundup 7005
 Basin Lucy 6975

CED	BW	WW	YW	SC	HP	CEM	MILK
5	1.5	78	124	0.34	14.0	6	20
CW	MARB	RE	\$M	\$F	\$G	\$B	\$C
47	0.41	0.47	71	87	37	125	233

- Ranks in the top 25% for 8 different EPDS or \$values.
- **Sells bred to Haynes Papa 0100 with a heifer calf due 1/31/2022.**



KCF Bennett Consent Y75 Sire of Lot 32

DVAuction
 Broadcasting Real-Time Auctions

ONLINE BIDDING

Real-time and proxy bidding will be available through DVAuction.com. Videos will be posted prior to the sale. For general questions, please contact the office at 402-316-5460.

Lot
33

Poss Everelda 8160

COW | REG: 19102391 | DOB: 02/23/18 | TAT: 8160 ANGUSGS

Poss Easy Impact 0119

Poss Easy Rider

Poss Erica 8514

Summitcrest Complete 1P55

Poss Everelda 4531

Three Trees Everelda S0727

Poss Total Impact 745

Poss Elmaretta 736

G A R Predestined

Poss Erica 432

C F Right Design 1802

Summitcrest Elba 1M17

Riverbend Mile High 3718

Three Trees Everelda 9064

CED	BW	WW	YW	SC	HP	CEM	MILK
6	2.1	51	79	0.55	14.3	8	26
CW	MARB	RE	\$M	\$F	\$G	\$B	\$C
34	0.54	0.61	76	66	45	111	220

- Ranks in the top 25% for 8 different EPDS or \$values including top 2% Claw and 4% Angle, PAP.
- **Sells bred to Haynes Papa 0100 with a heifer calf due 2/2/2022.**




Poss Easy Rider Sire of Lot 33


W D
Spring Bred Cows

#19597261 - 09/05/2019
Poss Maverick x Poss Ellunamere 399
by Poss Easy Impact 0119

POSS DEADWOOD



Matthew 6:19-21



KEEP IN TOUCH!
We will be announcing our
September and October
Semen Sales!

Chris Earl 630-675-6559
Wes Tiemann 816-244-4462

CED	BW	WW	YW	MILK	CW	MARB	RE	\$M	\$W	\$F	\$G	\$B	\$C
13	-1.0	81	146	26	79	1.85	0.96	73	86	137	106	243	390
10%	10%	5%	4%	45%	2%	1%	10%	25%	5%	1%	1%	1%	1%

GENOMICS

CED	BW	WW	YW	DMI	YH	SC	DOC	HP	CEM	MILK	MW	MH	CW	MARB	RE	FAT	TEND
24	23	6	5	87	16	19	34	28	66	35	15	23	4	1	21	78	1

POSS ANGUS FALL FEMALE SALE

POSS ANGUS

*Danny, Kristi, Nolan, Nathan,
Neleigh and Natalie Poss*
48981 801st Rd | Scotia, NE 68875



Fall Female Sale



Selling

*Half Interest
in the Dam of Rawhide!*

**POSS BLUEBLOOD
6502**

◀ **SEPTEMBER 8, 2021 - 5 PM** ▶
AT THE RANCH NEAR SCOTIA, NEBRASKA

SELLING 40+ HEAD

Donor Cows, Heifer Calves, Heifer Pregnancies, Bred Heifers & Cows