

Inaugural  
**Female Sale**



POSS BLUEBLOOD 410  
Sells as Lot 4



LEADING EDGE GENETICS

**NOVEMBER 20, 2020**

5:00 PM - AT THE RANCH - SCOTIA, NE

**POSS** *equals* **POWER**

# Welcome



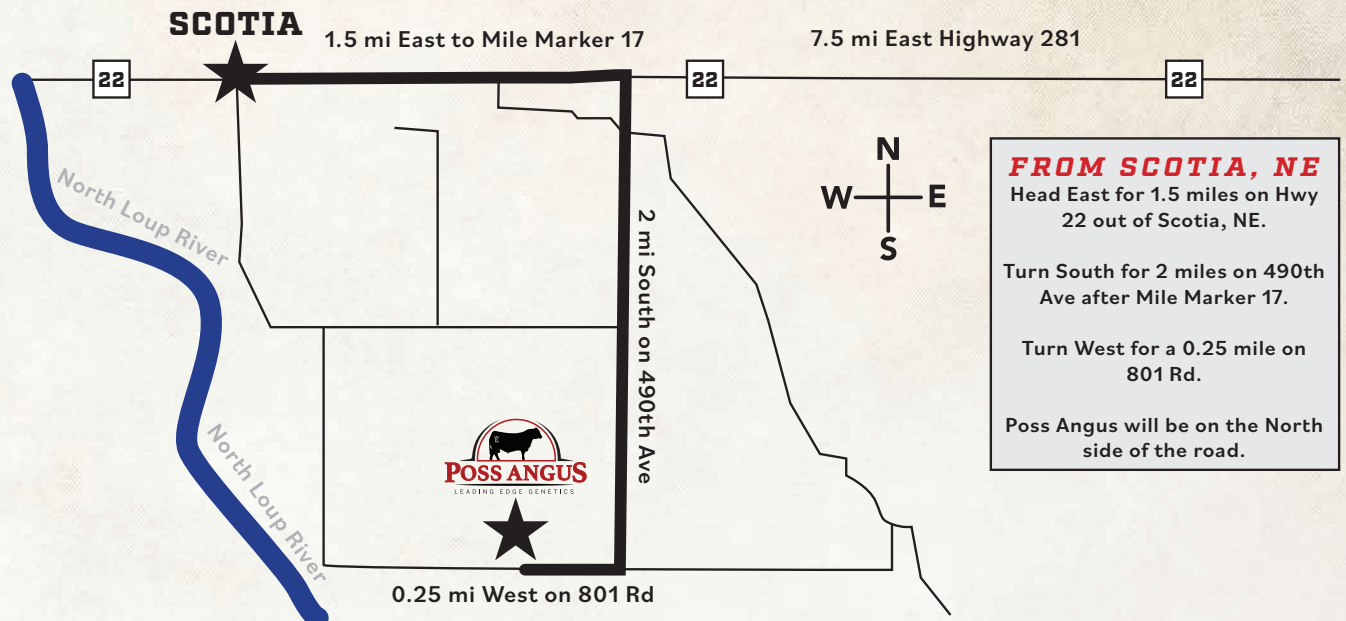
It is with great anticipation and gratitude that our family invite you to our 2020 Female Sale. Just over 30 years ago, Danny started his vision of Poss Angus by purchasing his first Angus female. There have been numerous blessings for our family over the 30 years and certainly some heartache along the way, but we are excited and ready to put this offering together for our inaugural all female sale! With Nolan finishing up college and returning home, we couldn't be more grateful to have him here full time! Nolan is our all-around guy who spends an enormous amount of time in the office long after the work outside is done. Nathan, is a junior at Fort Hays State University, and he has managed to spend a great deal of time at home this past year helping us in every imaginable way. Our greatest blessing of the year was having all four of our kids home and engaged in the everyday aspects of running this operation. I'm sure we speak for many farm and ranch families when we say that the pandemic brought us closer and stronger than ever. We are grateful for our family, their friends, and our team. Without them, and our God, we would not be where we are today!

When the idea was first brought to the table to host our first all female sale, we came to an agreement that we would hold nothing back, to make this first sale the best we could possibly offer. Although it will be tough to see such great females with such bright futures leave the ranch, we also feel that the possibilities are endless. Never before have we offered such elite offerings straight from the top of every group. In this offering, you will find cattle that cover all the bases, in terms of phenotype, EPDs, and pedigrees on the cutting edge of the Angus breed. Included will be the dam of the great Maverick, as well as sisters, and females carrying his service. Also, for the first time, we will be selling the influence of Rawhide, our all-time high selling bull this year that has taken the industry by storm. Do not miss out on the pregnancy by his mother in Lot 3 that we feel offers as much value as any in this entire offering. Lot 4 will feature the dam of our all-time high selling heifer that sold in Denver last year and was the talk of The Yards. There is literally something in here for everybody.

As always, the cattle will sell 100% guaranteed and is something we do not take lightly. If you have a problem, we want to be the first to know about it so we can handle it to the best of our capability. The sale will start at 5 PM with a meal and cold refreshments following the conclusion of the sale. If you have any questions regarding the sale, be sure to give Danny, Nolan, or Nate a call, as we love nothing more than talking Angus cattle with our fellow breeders. We will look forward to seeing you all November 20th at the ranch!

*Danny & Kristi Poss  
and Family*

## DIRECTIONS TO THE SALE SITE



**Danny, Kristi, Nolan, Nathan, Neleigh and Natalie Poss**

48981 801st Rd | Scotia, NE 68875 | bulls@possangus.com

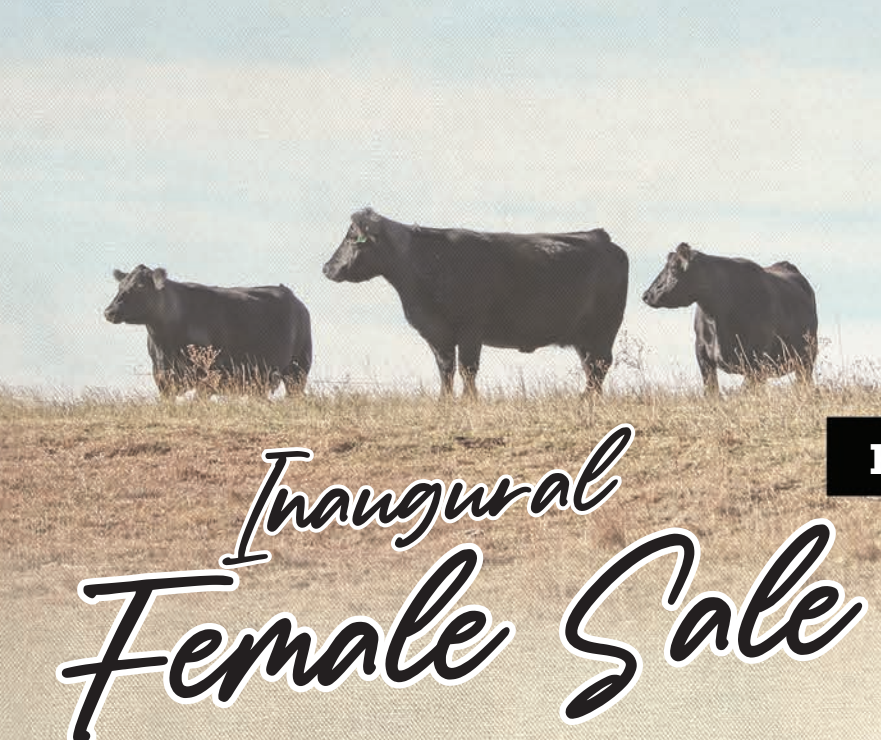
Danny: 308-571-0417 | Nolan: 308-571-0559 | Nathan: 308-571-0506



*PossAngus.com*



**POSS ANGUS INAUGURAL FEMALE SALE**



# Inaugural Female Sale

**FRIDAY, NOVEMBER 20, 2020**

**5:00 PM — AT THE RANCH — SCOTIA, NE**

*Selling*

**43 LOTS OF ELITE POSS GENETICS!**

*Donor Cows, Heifer Calves, Heifer Pregnancies,  
Bred Heifers, Bred Cows, and Fall Pairs*

## **SALE LOCATION**

Poss Angus - 48981 801st Road - Scotia, NE 68875

## **SALE CONTACTS**

Danny Poss.....308-571-0417, bulls@possangus.com  
Nolan Poss.....308-571-0559  
Nathan Poss.....308-571-0506

## **AUCTIONEER**

Matt Lowery.....308-750-6119

## **CONSULTANTS**

Chris Earl, CK6 Consulting.....630-675-6559  
Wes Tiemann, CK6 Consulting.....816-244-4462  
Tom Dalbey.....404-372-0973  
Myron Benes.....402-741-2040  
Dallas Woltemath.....308-390-6400

## **REPRESENTATIVES**

Levi Landers, Angus Journal.....308-730-1396  
Alan Sears, Western Ag Reporter.....970-396-7521  
Drew Feller, Tri-State Livestock.....402-841-4215  
Chris Beutler, Midwest Messenger....402-380-8244

## **ACCOMMODATIONS**

Cobblestone Inn & Suites - Ord, NE.....308-728-5122  
Super 8 Motel - St. Paul, NE.....308-754-4554

## **INSURANCE**

Jared Mohnen of Dakota Ag Insurance will be available to insure your purchases.  
Jared Mohnen 605-999-4475

## **LIABILITY**

Poss Angus assumes no liability in the event of an accident. Persons attending the sale do so at their own risk.

## **PHONE BIDDING**

Phone bids will be handled in a confidential manner. If you are unable to attend the sale, please contact Danny or Nolan prior to the sale so they can assist you.

## **TERMS**

All cattle will sell under the terms and conditions recommended by the American Angus Association.

## **TRUCKING**

Truckers believed to be reliable will be able to assist in deliveries. Any animal purchased within the state will be delivered to a central point.  
Randy Lathrop 847-910-4673

## **HEALTH**

All cattle will be accompanied by proper health certificates for immediate shipment.

## **GUARANTEE**

Poss Angus will guarantee 100% satisfaction on all sight unseen purchases through any of the consultants or representatives associated with the sale.

## **ONLINE BIDDING**

# **DVAuction**

**Broadcasting Real-Time Auctions**

Real-time and proxy bidding will be available through DVAuction.com. Videos will be posted prior to the sale. For general questions, please contact the office at 402-316-5460.  
Justin Dikoff 605-290-0635

# feature lots



W  
P

Lot 1 / Dam of Maverick **Poss Pride 5163**



W  
P

Maternal Brother to Lots 1A-1C **Poss Maverick**

## / Poss Pride 5163

**COW** REG 18348384 **DOB** 02/28/15 **TAT** 5163

Hoover Dam  
**Poss Hoover Dam 2509**  
 Poss Erica 793  
**ANGUS**  
 G A R Predestined  
**Poss Pride 9526**  
 Baldrige Pride R600

SydGen C C & 7  
 Erica of Ellston C124  
 Poss 112 524  
 Poss Erica 4507  
 B/R New Design 036  
 G A R Ext 4206  
 Hyline Right Time 338  
 Pleasant Pill of Conanga

CED	BW	WW	YW	SC	HP	CEM	MILK
1	3.1	67	121	1.15	12.3	6	35
CW	MARB	RE	\$M	\$F	\$G	\$B	\$C
62	1.00	0.67	63	112	71	182	299

**Sells open and ready to flush.** 5163 is the dam of the \$69,000 Poss Maverick and sells in the prime of her life. Her production record posts 2@118 for WW, 1@ 116 YW, 3@102 Marbling and 3@108 for RE. She currently ranks in the top 25% for 19 different EPDS or \$Values. Her combination of an outcross pedigree and elite marbling are rare and highly desired. Her son, Poss Maverick, has caught fire across the country for his ability to sire moderation and thickness with marbling. His power and marbling come from his great dam. 5163 is as visually impressive as any cow on the ranch and she deserves her spot as Lot 1 of our first Inaugural Production Sale. 5163 has been flushed 7 times conventionally for an average of 12 transferrable embryos.

# feature lots



W  
D

Lot 1A Poss Pride 9525

## 1a Poss Pride 9525

COW REG 19416976 DOB 02/15/19 TAT 9525

Jindra Acclaim  
**Jindra Blackout**  
 Jindra Judy J 1314 3150  
**ANGUS**  
 Poss Hoover Dam 2509  
**Poss Pride 5163**  
 Poss Pride 9526

Jindra 3rd Dimension  
 Jindra Blackbird Lassy 1111  
 G T Shear Force  
 Hoff Judy S C 669 1314  
 Hoover Dam  
 Poss Erica 793  
 G A R Predestined  
 Baldrige Pride R600

CED	BW	WW	YW	SC	HP	CEM	MILK
-2	5.1	82	150	0.71	13.4	6	32
CW	MARB	RE	\$M	\$F	\$G	\$B	\$C
92	0.75	0.65	68	141	58	199	326

*Sells bred to Sitz Resilient 10208 due 1/23/20 with a sexed heifer embryo. 9525 ranks in the top 25% for 17 different EPDS or \$Values including top 1% for \$C, \$B, CW and YW and posted a 125 WW ratio. 9525 combines two of the best parts of the our program, the dam of Poss Maverick and our \$135,000 herd sire, Jindra Blackout. Added frame here with length and angularity. Exciting pair with outcross genetics for the donor pen.*

## 1b Poss Pride 0512

COW REG 19738339 DOB 02/07/20 TAT 0512

KM Broken Bow 002  
**Spring Cove Reno 4021**  
 Spring Cove Liza 021  
**ANGUS**  
 Poss Hoover Dam 2509  
**Poss Pride 5163**  
 Poss Pride 9526

Summitcrest Complete 1P55  
 Summitcrest Princess OP12  
 C C A Emblazon 702  
 Spring Cove Liza 721  
 Hoover Dam  
 Poss Erica 793  
 G A R Predestined  
 Baldrige Pride R600

CED	BW	WW	YW	SC	HP	CEM	MILK
10	0.3	78	131	0.85	14.2	12	36
CW	MARB	RE	\$M	\$F	\$G	\$B	\$C
66	1.05	0.68	74	100	74	174	300

*0512 ranks in the top 25% for 19 different EPDS or \$values to record one of the most elite and balanced EPD profiles in the offering. Excellent BW to YW spread with over 1 marbling and 300 \$C. Her sire, Spring Cove Reno, is siring some of the best combinations of maternal and high-end carcass genetics in the business.*



W  
D

Flush Brother to Lot 1A Poss Polaris

## 1c Poss Pride 0504

COW REG 19738333 DOB 02/06/20 TAT 0504

KM Broken Bow 002  
**Spring Cove Reno 4021**  
 Spring Cove Liza 021  
**ANGUS**  
 Poss Hoover Dam 2509  
**Poss Pride 5163**  
 Poss Pride 9526

Summitcrest Complete 1P55  
 Summitcrest Princess OP12  
 C C A Emblazon 702  
 Spring Cove Liza 721  
 Hoover Dam  
 Poss Erica 793  
 G A R Predestined  
 Baldrige Pride R600

CED	BW	WW	YW	SC	HP	CEM	MILK
8	-0.2	65	111	1.10	14.3	12	38
CW	MARB	RE	\$M	\$F	\$G	\$B	\$C
50	1.37	0.53	76	83	84	167	293

*0504 ranks in top 25% for 14 different EPDS or \$values. Big marbling EPD on this full sister to lot 1B.*



W  
D

Lot 2 Poss Ellunamere 399

2 Poss Ellunamere 399

COW REG 17678028 DOB 02/17/13 TAT 399

Poss Total Impact 745  
**Poss Easy Impact 0119**  
 Poss Elmaretta 736  
**ANGUS**  
 G A R Predestined  
**Poss Ellunamere 0170**  
 Poss Ellunmere 204

TC Total 410  
 Poss Blackcap 5116  
 Hyline Right Time 338  
 Poss Elmaretta 025  
 B/R New Design 036  
 G A R Ext 4206  
 Connealy Forefront  
 Poss Ellunmere 014

CED	BW	WW	YW	SC	HP	CEM	MILK
12	-0.9	52	104	0.75	16.3	14	26
CW	MARB	RE	\$M	\$F	\$G	\$B	\$C
53	1.16	0.58	66	114	72	186	307

**Sells open with Lot 2A at side.** 399 ranks in the top 25% for 18 different EPDs or \$values including top 1% for \$C, \$B and Claw. She is the only proven cow in the breed with her combination of CED, BW, Claw, Marbling, \$B and \$C. 399 will enter a donor pen this fall, as she has one of the most exciting bull prospects of the 2021 season coming to our bull sale. This fall yearling, Poss Maverick 9731, records an EPD profile of CED 13, YW 135, CW 72, Marb 1.67, RE 0.82, \$B 227, and \$C 363. Great opportunity here to acquire the dam of a herd sire prospect and genetically run side-by-side with a sire getting national use and attention. The Hoover No Doubt heifer at side pushes your program even further down the road of marketable proven genetics for years to come. Don't miss this opportunity!

2a Poss Ellunamere 0713

COW REG 19813367 DOB 08/27/20 TAT 0713

Mogck Bullseye  
**Hoover No Doubt**  
 Miss Blackcap Ellston J2  
**ANGUS**  
 Poss Easy Impact 0119  
**Poss Ellunamere 399**  
 Poss Ellunmere 0170

MOGCK Sure Shot  
 Mogck Mary 1255  
 SydGen C C & 7  
 Miss Blackcap Ellston D154  
 Poss Total Impact 745  
 Poss Elmaretta 736  
 G A R Predestined  
 Poss Ellunmere 204

CED	BW	WW	YW	SC	HP	CEM	MILK
5	2.0	63	113	1.92	16.6	10	25
CW	MARB	RE	\$M	\$F	\$G	\$B	\$C
51	0.93	0.66	77	93	62	155	278

0713 ranks in the top 25% for 15 different EPDs or \$values. Hoover No Doubt, without question, dominates the landscape for mass, docility and function. His progeny across the country are the easy-to-find ones in any program. The dam of 0713 is a female that will be on the front end of a program in 2021 and this calf will be proof along with her son who will be a featured lot in the 2021 Bull Sale. What a great opportunity to get two donor females! Owning genetics that are rare and elite is the key to marketing in the seedstock business and we can think of no better opportunity than 0713 and her dam this fall.

# feature lots



**PW** Dam of Lot 3 **Poss Blueblood 6502**



**PW** Sire of Lot 3 **Connealy Clarity**

## 3 Connealy Clarity x 6502

**HEIFER PREGNANCY DUE 2/3/21**

Cherry Creek Land Grant  
**Connealy Clarity**  
Breshie of Conanga 6988

K C F Bennett Homestead  
Cherry Crk Eva B27 M  
Connealy Confidence Plus  
Brelly of Conanga 367

**ANGUS**

Poss Easy Impact 0119  
**Poss Blueblood 6502**  
Poss Blueblood 920

Poss Total Impact 745  
Poss Elmaretta 736  
Connealy All Around  
Poss Blueblood Lady 5114

**SIRE**

CED	BW	WW	YW	SC	HP	CEM	MILK
9	1.	77	148	0.97	17.4	8	24
CW	MARB	RE	\$M	\$F	\$G	\$B	\$C
71	1.08	1.04	88	129	80	209	359

**DAM**

CED	BW	WW	YW	SC	HP	CEM	MILK
3	1.6	75	126	0.53	17.3	8	21
CW	MARB	RE	\$M	\$F	\$G	\$B	\$C
64	0.94	0.89	77	111	67	178	308

*Heifer pregnancy due 2/3/21. 6502 ranks in the top 25% for an incredible 19 different EPDs or \$values including top 1% for \$B and \$C. 6502 is the donor dam of this pregnancy and is arguably the best female at Poss Angus. She is the dam of the top selling bull of the 2020 Bull Sale, Poss Rawhide, who sold to ST Genetics for \$140,000. He has received national use. Without question, 6502 is one the elite genetic pieces in the country and this combination to Connealy Clarity could be foundational and have the ability to carry your prefix for years. Clarity was the \$60,000 selection of ST Genetics in the 2020 Connealy Bull Sale and offers 18 different EPDs or \$values in top 25%.*



**PW** Maternal Brother to Lot 3 **Poss Rawhide**



# feature lots



## Lot 4 Poss Rita 5116

### 4 Poss Rita 5116

**COW** REG 18349745 **DOB** 02/18/15 **TAT** 5116

Sitz Upward 307R  
**Connealy Uptown 098E**  
 Jace of Conanga 4660 818N  
**ANGUS**  
 Rito Revenue 5M2 of 2536 Pre  
**Rita 12D8 of 5F56 Rito 5M2**  
 Rita 5F56 of 1198 FD

Connealy Onward  
 Sitz Henrietta Pride 81M  
 Connealy Thunder  
 Jace of Conanga 234  
 G A R Predestined  
 G A R Precision 2536  
 C A Future Direction 5321  
 Rita 1198 of 2536 Rito 616

CED	BW	WW	YW	SC	HP	CEM	MILK
14	-0.7	68	119	0.06	17.3	13	37
CW	MARB	RE	\$M	\$F	\$G	\$B	\$C
49	1.25	0.89	99	85	83	168	317

#### Sells open and ready to flush.

5116 ranks in the top 25% for 16 different EPDs or \$values including top 1% \$C, \$M, \$W and \$G. 5116 is the only proven female in the breed for her combination of CED, YW, \$M and \$C. An impressive individual, she also records outstanding progeny ratios - 3@108 WWR, 2@104 YWR, 2@155 Marbling ratio and 2@109 RE ratio. Her daughter, Poss Rita 9150, was the \$100,000 top selling female of the 2020 Foundation Female Sale at the National Western Stock Show. Great opportunity here to acquire a young donor with a great track record in the pasture and the marketplace. 5116 has been flushed three times conventionally for an average of 14 transferrable embryos.



Daughter of Lot 4 Poss Rita 9150

### 4a Poss Rawhide x 5116

**HEIFER PREGNANCY DUE 1/30/21**

Poss Maverick  
**Poss Rawhide**  
 Poss Blueblood 6502  
**ANGUS**  
 Connealy Uptown 098E  
**Poss Rita 5116**  
 Rita 12D8 of 5F56 Rito 5M2

Basin Payweight 1682  
 Poss Pride 5163  
 Poss Easy Impact 0119  
 Poss Blueblood 920  
 Sitz Upward 307R  
 Jace of Conanga 4660 818N  
 Rito Revenue 5M2 of 2536 Pre  
 Rita 5F56 of 1198 FD

SIRE	CED	BW	WW	YW	SC	HP	CEM	MILK
	9	-0.3	79	138	1.11	13.1	8	29
DAM	CW	MARB	RE	\$M	\$F	\$G	\$B	\$C
	73	1.05	0.80	69	123	72	195	322
DAM	CED	BW	WW	YW	SC	HP	CEM	MILK
	14	-0.7	68	119	0.06	17.3	13	37
DAM	CW	MARB	RE	\$M	\$F	\$G	\$B	\$C
	49	1.25	0.89	99	85	83	168	317







W  
D

Lot 5 **Poss Blueblood 410**

**5 Poss Blueblood 410**

COW	REG	DOB	TAT
	17918935	02/01/14	410
Poss Total Impact 745			
Poss Easy Impact 0119			
Poss Elmaretta 736			
S A V Ironclad 8104			
Poss Blueblood 2135			
Poss Blueblood 920			
TC Total 410			
Poss Blackcap 5116			
Hyline Right Time 338			
Poss Elmaretta 025			
TC Gridiron 258			
S A V Emblynette 5474			
Connealy All Around			
Poss Blueblood Lady 5114			

CED	BW	WW	YW	SC	HP	CEM	MILK
5	0.0	63	106	0.14	14.4	13	25
CW	MARB	RE	\$M	\$F	\$G	\$B	\$C
48	0.90	0.94	56	93	67	160	264

**Sells open and ready to flush.**

410 ranks in top 25% for 19 different EPDS or \$values. 410 is a foundation donor as her phenotype and physical presence is stunning. Her deceased sire, Poss Easy Impact 0119, continues to grow in his popularity through his daughters. Longevity, udder quality, angularity and a balanced EPD profile propels these daughters to the top of the marketplace on a consistent basis. 410 is yet another example of Easy Impact's genetic quality. 410 has been flushed 9 times conventionally for an average of 7 transferrable embryos.



W  
D

Maternal Brother to Lot 5A **Poss Maverick 948**

**5A Poss Blueblood 9611**

COW	REG	DOB	TAT
	19673394	02/13/19	9611
Connealy Consensus			
Enchant of Conanga 2423			
Connealy Hemisphere 957L			
Jase of Conanga 4660			
Poss Total Impact 745			
Poss Elmaretta 736			
S A V Ironclad 8104			
Poss Blueblood 920			

CED	BW	WW	YW	SC	HP	CEM	MILK
4	-0.1	59	105	-0.28	15.7	9	40
CW	MARB	RE	\$M	\$F	\$G	\$B	\$C
48	0.88	0.63	68	93	63	156	270

**Sells bred to Sitz Resilient 10208 due 1/19/21 with a sexed heifer embryo.** 9611 ranks in the top 25% for 18 different EPDs or \$values. An excellent daughter of 410 crossed with a top maternal sire, Connealy Mainstay. Mainstay is part of Genex and sires consistent, deep sided, feminine females. 9611's maternal brother, Poss Maverick 948, was a \$11,000 selection of Belle Point Angus Ranch, AR in the 2020 bull sale.

# feature lots



W  
D

Dam of Lot 6A-6D **Poss Elmaretta 648**



W  
D

Lot 6A **Poss Elmaretta 0612**

0612 ranks in top 25% for 16 different EPDs or \$values including top 1% for WW, YW, CW, \$F, \$B and \$C. Great opportunity here to acquire a tank of female with elite EPD profile. Poss Maverick continues to gain market share as he produces cattle with longevity and fleshing ability with superior marbling genetics. The donor dam of lots 6A-6D is one of the best cows on the ranch and the dam of Poss Wrangler, who was the \$22,000 selection of Alta Genetics in the 2020 Bull Sale. 648 has 35 calves on her progeny report.



W  
D

Flush Brother to Lots 6A-6B **Poss Wrangler**

## 6a **Poss Elmaretta 0612**

**COW** REG 19738376 **DOB** 01/18/20 **TAT** 0612

Basin Payweight 1682

**Poss Maverick**

Poss Pride 5163

**ANGUS**

Connealy Power Play

**Poss Elmaretta 648**

Poss Elmaretta 9104

Basin Payweight 006S

21AR O Lass 7017

Poss Hoover Dam 2509

Poss Pride 9526

MCATL Triple Stack

Boka Gena of Conanga 783

Connealy All Around

Poss Elmaretta 227

CED	BW	WW	YW	SC	HP	CEM	MILK
1	3.1	89	156	1.36	11.7	4	28
CW	MARB	RE	\$M	\$F	\$G	\$B	\$C
80	1.32	0.57	56	125	80	205	322

# feature lots



W  
D

Lot 6C Poss Elmaretta 0654

## 6b Poss Elmaretta 0557

**COW** REG 19738369 **DOB** 03/07/20 **TAT** 0557

Basin Payweight 1682  
**Poss Maverick**  
 Poss Pride 5163  
**ANGUS**  
 Connealy Power Play  
**Poss Elmaretta 648**  
 Poss Elmaretta 9104

Basin Payweight 0065  
 21AR O Lass 7017  
 Poss Hoover Dam 2509  
 Poss Pride 9526  
 MCATL Triple Stack  
 Boka Gena of Conanga 783  
 Connealy All Around  
 Poss Elmaretta 227

CED	BW	WW	YW	SC	HP	CEM	MILK
-2	3.5	77	130	0.57	13.7	4	24
CW	MARB	RE	\$M	\$F	\$G	\$B	\$C
64	1.10	0.61	57	102	71	173	281

0557 ranks in the top 25% for 12 different EPDs or \$values.

## 6c Poss Elmaretta 0654

**COW** REG 19776444 **DOB** 01/31/20 **TAT** 0654

KM Broken Bow 002  
**Spring Cove Reno 4021**  
 Spring Cove Liza 021  
**ANGUS**  
 Connealy Power Play  
**Poss Elmaretta 648**  
 Poss Elmaretta 9104

Summitcrest Complete 1P55  
 Summitcrest Princess 0P12  
 C C A Emblazon 702  
 Spring Cove Liza 721  
 MCATL Triple Stack  
 Boka Gena of Conanga 783  
 Connealy All Around  
 Poss Elmaretta 227

CED	BW	WW	YW	SC	HP	CEM	MILK
4	2.4	90	153	0.53	18.3	10	32
CW	MARB	RE	\$M	\$F	\$G	\$B	\$C
78	0.76	0.61	86	122	62	184	325

0654 ranks in the top 2% for 17 different EPDs or \$values including top 1% for WW, YW, HP, Claw, CW, \$W, \$F and \$C. She is the only female in the breed who posts these top 1% for rankings. This female will make her way into a donor pen.

## 6d G A R Home Town x 648

**HEIFER PREGNANCY DUE 1/30/21**

G A R Ashland  
**G A R Home Town**  
 Chair Rock Sure Fire 6095  
**ANGUS**  
 Connealy Power Play  
**Poss Elmaretta 648**  
 Poss Elmaretta 9104

G A R Early Bird  
 Chair Rock Ambush 1018  
 G A R Sure Fire  
 Chair Rock Progress 3005  
 MCATL Triple Stack  
 Boka Gena of Conanga 783  
 Connealy All Around  
 Poss Elmaretta 227

**SIRE**

CED	BW	WW	YW	SC	HP	CEM	MILK
16	-0.4	68	128	0.97	13.4	17	31
CW	MARB	RE	\$M	\$F	\$G	\$B	\$C
59	1.82	1.10	70	110	116	226	363

**DAM**

CED	BW	WW	YW	SC	HP	CEM	MILK
4	3.7	2.4	78	127	14.4	9	21
CW	MARB	RE	\$M	\$F	\$G	\$B	\$C
55	0.49	0.31	76	94	39	133	249

Exciting complementary mating here with the cross of the \$475,000 GAR Hometown on the power and function of Poss Elmaretta 648. Another opportunity to put your prefix on progressive Poss genetics. G A R Hometown posts an incredible EPD profile and has received wide national use. He will get to proven level in a hurry.



W  
D

Sire of Lot 6D G A R Home Town

# feature lots



W  
D

## Lot 7 Poss Erica 820

### 7 Poss Erica 820

**COW** REG 19176810 DOB 01/29/18 TAT 820

EF Commando 1366	EF Complement 8088
<b>Baldrige Compass C041</b>	Riverbend Young Lucy W1470
Baldrige Isabel Y69	Styles Upgrade J59
<b>ANGUS</b>	Baldrige Isabel T935
Connealy Uptown 098E	Sitz Upward 307R
<b>Poss Erica 657</b>	Jace of Conanga 4660 818N
Poss Erica 0703	Connealy Kaboom 380
	Poss Erica 604

CED	BW	WW	YW	SC	HP	CEM	MILK
3	3.7	93	155	0.57	15.6	7	35
CW	MARB	RE	\$M	\$F	\$G	\$B	\$C
77	0.35	1.06	83	113	46	159	289

**Sells open and ready to flush.** 820 ranks in top 25% for 16 different EPDs or \$values including top 1% for WW, YW, CW and \$W. 820 is the #1 YW Baldrige Compass daughter in the breed. A stunning female with great lines, extension and depth. She will be a sale day favorite. 820 has been flushed three times for an average of 11 transferrable embryos.

7a

Poss Rawhide ranks in the top 25% for 20 different EPDs or \$values and looks to be one of the real genetic prospects for 2021 and beyond. This cross on 820 looks to be a perfect match on phenotype and performance traits. Add a new cow family with one of the best young sires in the country.



W  
D

Sire of Lot 7A Poss Rawhide

### 7a Poss Rawhide x 820

**HEIFER PREGNANCY DUE 1/30/21**

Poss Maverick	Basin Payweight 1682
<b>Poss Rawhide</b>	Poss Pride 5163
Poss Blueblood 6502	Poss Easy Impact 0119
	Poss Blueblood 920
Baldrige Compass C041	EF Commando 1366
<b>Poss Erica 820</b>	Baldrige Isabel Y69
Poss Erica 657	Connealy Uptown 098E
	Poss Erica 0703

SIRE	CED	BW	WW	YW	SC	HP	CEM	MILK
	9	-0.3	79	138	1.11	13.1	8	29
DAM	CW	MARB	RE	\$M	\$F	\$G	\$B	\$C
	73	1.05	0.80	69	123	72	195	322
DAM	CED	BW	WW	YW	SC	HP	CEM	MILK
	3	3.7	93	155	0.57	15.6	7	35
DAM	CW	MARB	RE	\$M	\$F	\$G	\$B	\$C
	77	0.35	1.06	83	113	46	159	289

# feature lots



Lot 8 Poss Erica 705

## 8 Poss Erica 705

**COW REG 18962469 DOB 01/26/17 TAT 705**

Connealy Consensus  
**K C F Bennett Fortress**  
 Thomas Patricia 9705

ANGUS<sup>SS</sup>

Poss Element 215  
**Poss Erica 5118**  
 Poss Erica 1518

KMK Alliance 6595 I87  
 Blinda of Conanga 004  
 S S Objective T510 OT26  
 Thomas Patricia 71138

Poss Easy Impact 0119  
 Poss Erica 004  
 ALC Big Eye D09N  
 Poss Erica 4602

CED	BW	WW	YW	SC	HP	CEM	MILK
13	-1.6	79	135	0.38	14.8	13	23
CW	MARB	RE	\$M	\$F	\$G	\$B	\$C
46	0.99	0.47	79	79	65	144	266

*Sells bred to Poss Wrangler due 2/20/21. 705 ranks in the top 25% for 17 different EPDS or \$values including top 1% for WW and \$W and top 2% YW. Her WWR 1 @ 113 and has served as a donor. Excellent CED to YW spread with top 10% Marbling. As much power as any female in the sale. Some Hoover No Doubt sons are headed to 2021 bull sale and look exceptional. 705 has been flushed three times conventionally to average 17 transferrable embryos.*



Lot 8A Poss Erica 0517

## 8a Poss Erica 0517

**COW REG 19738343 DOB 02/09/20 TAT 0517**

Mogck Bullseye  
**Hoover No Doubt**  
 Miss Blackcap Ellston J2

ANGUS<sup>SS</sup>

K C F Bennett Fortress  
**Poss Erica 705**  
 Poss Erica 5118

MOGCK Sure Shot  
 Mogck Mary 1255  
 SydGen C C & 7  
 Miss Blackcap Ellston D154

Connealy Consensus  
 Thomas Patricia 9705  
 Poss Element 215  
 Poss Erica 1518

CED	BW	WW	YW	SC	HP	CEM	MILK
8	0.8	71	134	1.12	15.6	16	30
CW	MARB	RE	\$M	\$F	\$G	\$B	\$C
54	0.71	0.57	69	99	53	152	266

*0517 ranks in the top 25% for 16 different EPDS or \$values. We like this flush of calves! Hoover No Doubt continues to dominate programs he has been used in for docility, capacity and muscle. Great donor prospect here. Excellent EPD profile marries up to excellent performance and phenotype.*

## Welcome from CK6 Consulting



Matthew 6:19-21

*Welcome to the Inaugural Poss Female Sale! Poss Angus is a family operation that is truly based in family. It is always a great joy to be able to see the youth of our business dig into the family business. If your brand is family, faith and genetics, I can think of no better program to consider. That is what you will find in Scotia, NE. Everyday, a full effort is put towards the creation of genetics that represent what they believe purebred Angus cattle should be. That approach has been widely accepted and sought after across the country. Poss Maverick and Poss Rawhide are two bulls that are doing a great job displaying the Poss brand. Maverick's dam is a featured part of this offering.*

*What a great opportunity to acquire females that drive this program. I have often said, the marketplace wants what you want to keep, not what you want to sell. This offering is full of "keepers!" In the era of technology, when an operation decides to be a female genetic source, the decision to sell the good ones can be challenging. However, there is no better way I know of then to have your brand perform in other programs. That will happen with this offering. Diverse and top-end performance, these females will impact programs across the country.*

*If you have a chance to stop by and go through the cattle prior to the sale, I highly recommend it. You will enjoy the hospitality, people and cattle. It is always wise to know the source of your genetics and Poss Angus is no different. They are the real deal! If I can be of any assistance, please feel free to contact me and look for videos coming soon on DV Auction.*

**Chris Earl 630-675-6559 – Wes Tiemann 816-244-4462**

*God Bless! Chris Earl*

# feature lots



**Lot 9A Poss Erica 0610**

## 9a Poss Erica 0610

<b>COW</b>	<b>REG</b> 19738374	<b>DOB</b> 01/18/20	<b>TAT</b> 0610				
Basin Payweight 1682		Basin Payweight 006S					
<b>Poss Maverick</b>		21AR O Lass 7017					
Poss Pride 5163		Poss Hoover Dam 2509					
Poss Pride 9526		Poss Pride 9526					
<b>ANGUS</b>		Summitcrest Complete 1P55					
KM Broken Bow 002		Summitcrest Princess 0P12					
<b>Poss Erica 327</b>		Connealy Impression 5549					
Poss Erica 1203		Poss Erica 853					
<b>CED</b>	<b>BW</b>	<b>WW</b>	<b>YW</b>	<b>SC</b>	<b>HP</b>	<b>CEM</b>	<b>MILK</b>
3	1.6	66	125	1.42	12.5	6	30
<b>CW</b>	<b>MARB</b>	<b>RE</b>	<b>\$M</b>	<b>\$F</b>	<b>\$G</b>	<b>\$B</b>	<b>\$C</b>
59	1.03	0.65	60	111	71	182	296

0610 ranks in top 25% for 16 different EPDs or \$values. The first of three maternal sisters to sell. The mating of the \$69,000 Poss Maverick to a past \$25,000 donor, Poss Erica 327, working at Double R Bar Ranch Plymouth, IN; has been excellent. 327 is one of the good females ever bred in our program and is an example of everything good in the KM Broken Bow daughters.



**Lot 9B Poss Erica 0601**

## 9b Poss Erica 0601

<b>COW</b>	<b>REG</b> 19819223	<b>DOB</b> 01/10/20	<b>TAT</b> 0601				
Musgrave Invasion		MCATL Pure Product 903-55					
<b>Panther Cr Incredible 6704</b>		MCATL Evergreen 619-K27T					
Panther Cr JH Blackbird 409		Apex Windy 078					
<b>ANGUS</b>		Panther Cr JH Blackbird 221					
KM Broken Bow 002		Summitcrest Complete 1P55					
<b>Poss Erica 327</b>		Summitcrest Princess 0P12					
Poss Erica 1203		Connealy Impression 5549					
		Poss Erica 853					
<b>CED</b>	<b>BW</b>	<b>WW</b>	<b>YW</b>	<b>SC</b>	<b>HP</b>	<b>CEM</b>	<b>MILK</b>
-1	2.9	92	152	0.25	17.8	7	16
<b>CW</b>	<b>MARB</b>	<b>RE</b>	<b>\$M</b>	<b>\$F</b>	<b>\$G</b>	<b>\$B</b>	<b>\$C</b>
64	0.45	0.58	64	96	39	135	239

0601 ranks in top 25% for 9 different EPDs or \$values. Her sire, Panther Cr Incredible, has over 300 progeny reported and ranks in the top 1% for WW and YW. Sharp heifer here with excellent muscle shape and eye appeal in a larger framed package.



**Lot 9C Poss Erica 9907**

## 9c Poss Erica 9907

<b>COW</b>	<b>REG</b> 19780129	<b>DOB</b> 09/05/19	<b>TAT</b> 9907				
SydGen Enhance		SydGen Exceed 3223					
<b>MOGCK Amplify</b>		SydGen Rita 2618					
Mogck High Rise 1105		Mogck Bullseye					
<b>ANGUS</b>		Mogck High Rise 1680					
KM Broken Bow 002		Summitcrest Complete 1P55					
<b>Poss Erica 327</b>		Summitcrest Princess 0P12					
Poss Erica 1203		Connealy Impression 5549					
		Poss Erica 853					
<b>CED</b>	<b>BW</b>	<b>WW</b>	<b>YW</b>	<b>SC</b>	<b>HP</b>	<b>CEM</b>	<b>MILK</b>
11	0.5	81	147	1.29	14.3	13	20
<b>CW</b>	<b>MARB</b>	<b>RE</b>	<b>\$M</b>	<b>\$F</b>	<b>\$G</b>	<b>\$B</b>	<b>\$C</b>
73	0.77	0.94	57	124	62	186	298

9907 ranks in top 25% for 18 different EPDs or \$values including top 1% for YW, \$F and \$B. A fall yearling sired by one of our featured herd sires, MOGCK Amplify. Amplify was the second high selling bull of the 2018 MOGCK Bull Sale selling for \$26,000. He currently ranks in the top 25% for 20 different EPDs or \$values. 9907 is like most other Amplify progeny who are angular and excel on EPD profile.

# feature lot and spring bred heifers

## 10 KR Miss Alliance 5273

COW	REG	DOB	TAT				
18244436	02/16/15	5273					
Mogck Bullseye	Mogck Mary 1255	MOGCK Sure Shot					
KR Bullseye 3451	VAR Rocky 80029	Mogck Mary 1255					
WK Queen 1540	WK Queen 9243	VAR Rocky 80029					
<b>ANGUS</b>		WK Queen 9243					
Moore Beef	H S A F Bando 1961	H S A F Bando 1961					
WK Miss Alliance 1344	Moore 216-Forefront 08	Moore 216-Forefront 08					
WK Miss Alliance 7026	Schurrtop MC 2500	Schurrtop MC 2500					
	L V V F Alliance J C 111	L V V F Alliance J C 111					
CED	BW	WW	YW	SC	HP	CEM	MILK
-4	5.4	62	104	0.48	9.6	1	36
CW	MARB	RE	\$M	\$F	\$G	\$B	\$C
44	0.05	0.45	52	82	24	106	189

**Sells open and ready to flush.** 5273 ranks in top 25% for 7 different EPDs or \$values. 5273 records 2@106 WWR, 2@100 YWR and 1@108 RE Ratio. 5273 originated in the Krebs Ranch program and shows the phenotypic selection pressure of that great program. 5273 has been flushed two times conventionally for an average of 6 embryos. Owned with Barstow Angus, NE.



Lot 10 KR Miss Alliance 5273

## 11 Poss Erica 9195

COW	REG	DOB	TAT				
19682496	02/28/19	9195					
Basin Payweight 1682	Basin Payweight 006S	Basin Payweight 006S					
Poss Maverick	21AR O Lass 7017	21AR O Lass 7017					
Poss Pride 5163	Poss Hoover Dam 2509	Poss Hoover Dam 2509					
<b>ANGUS</b>	Poss Pride 9526	Poss Pride 9526					
PA Safeguard 021	G A R New Design 5050	G A R New Design 5050					
Poss Erica 4133	PA Lorna Marshall 2905-730	PA Lorna Marshall 2905-730					
Poss Erica 186	R/M Ironstone 4047	R/M Ironstone 4047					
	Poss Erica 794	Poss Erica 794					
CED	BW	WW	YW	SC	HP	CEM	MILK
-7	3.3	65	125	1.15	14.4	0	30
CW	MARB	RE	\$M	\$F	\$G	\$B	\$C
65	1.52	0.64	39	118	95	213	315

**Sells bred to Jindra Blackout due 2/10/21 with a sexed heifer embryo.** 9195 ranks in the top 25% for 17 Different EPDs or \$values including top 1% for Marbling, \$F, \$G, \$B and \$C. Excellent and perfect uddered Safeguard dam on the bottom to ensure muscle in this bred heifer. Great opportunity in this offering to put together a top set of Poss Maverick daughters. Many sisters to 9195 are left in the herd. Big marbling EPD here to help position your program for the future and current marketplace.



Lot 11 Poss Erica 9195

## 12 Poss Blackcap 962

COW	REG	DOB	TAT				
19525511	02/09/19	962					
Basin Payweight 1682	Basin Payweight 006S	Basin Payweight 006S					
Poss Maverick	21AR O Lass 7017	21AR O Lass 7017					
Poss Pride 5163	Poss Hoover Dam 2509	Poss Hoover Dam 2509					
<b>ANGUS</b>	Poss Pride 9526	Poss Pride 9526					
Connealy Capitalist 028	S A V Final Answer 0035	S A V Final Answer 0035					
Poss Blackcap 4537	Prides Pita of Conanga 8821	Prides Pita of Conanga 8821					
Poss Blackcap 0510	TC Total 410	TC Total 410					
	Poss Blackcap 5116	Poss Blackcap 5116					
CED	BW	WW	YW	SC	HP	CEM	MILK
4	1.6	81	136	1.61	11.9	9	27
CW	MARB	RE	\$M	\$F	\$G	\$B	\$C
70	0.98	0.79	71	114	72	186	312

**Sells bred to G A R Hometown due 2/5/21 with a sexed heifer embryo.** 962 ranks in top 25% for an excellent 20 different EPDs or \$values including top 1% for Angle, \$B and \$C. 962 recorded a 112 WWR. Phenotypically one of the best Maverick daughters chosen from the top of the replacement pen. Excellent genetic package here with donor performance, phenotype and EPD profile. Love the mating to G A R Hometown on Maverick daughters, especially when it's a heifer calf.



Lot 12 Poss Blackcap 962

# spring bred heifers



**Lot 13 Poss Blackcap 9119**

## 13 Poss Blackcap 9119

COW	REG	19513881	DOB	02/17/19	TAT	9119
Mogck Bullseye			MOGCK Sure Shot			
<b>Hoover No Doubt</b>			Mogck Mary 1255			
Miss Blackcap Ellston J2			SydGen C C & 7			
<b>ANGUS</b>			Miss Blackcap Ellston D154			
Connealy Consensus 7229			Connealy Consensus			
<b>Poss Blackcap 4530</b>			Blue Lilly of Conanga 16			
Poss Blackcap 0510			TC Total 410			
			Poss Blackcap 5116			

CED	BW	WW	YW	SC	HP	CEM	MILK
2	3.8	78	137	1.30	10.9	12	17
CW	MARB	RE	\$M	\$F	\$C	\$B	\$C
55	1.13	0.72	59	90	73	163	270

*Sells bred to E&B Plus One due 1/22/21 with a sexed heifer embryo. 9119 ranks in top 25% for 14 different EPDs or \$values. 9119 recorded a 108 WWR. Big hipped Hoover No Doubt daughter here with top end carcass values. Dam is a donor who records a 2@118 Marbling ratio. This will be a real progressive pair come spring.*



**Service Sire Heiken Broadview**

## 14 Poss Rita 935

COW	REG	19525522	DOB	01/31/19	TAT	935
SydGen Enhance			SydGen Exceed 3223			
<b>MOGCK Amplify</b>			SydGen Rita 2618			
Mogck High Rise 1105			Mogck Bullseye			
<b>ANGUS</b>			Mogck High Rise 1680			
Baldrige Compass C041			EF Commando 1366			
<b>Poss Rita 7163</b>			Baldrige Isabel Y69			
Poss Rita 4510			Poss Easy Impact 0119			
			Poss Rita 202			

CED	BW	WW	YW	SC	HP	CEM	MILK
8	3.8	77	142	0.95	15.1	16	30
CW	MARB	RE	\$M	\$F	\$C	\$B	\$C
66	0.68	0.98	76	114	58	172	299

*Sells bred to Heiken Broadview due 1/24/21 with a sexed heifer embryo. 935 ranks in top 25% for 18 different EPDs or \$values. 935 posted a 115 YWR. Outcross genetics here that will calve to one of the spring highlights, Heiken Broadview, who is currently in ABS Global's beef line up and was one of the most talked about bulls in the Montana spring bull sale season. He commanded an all-time high selling price of \$85,000 at J.C. Heiken.*

## 15 Poss Erica 913

COW	REG	19487505	DOB	01/27/19	TAT	913
Poss Lasting Impact 3118			Poss Easy Impact 0119			
<b>Poss Achievement</b>			Poss Blackbird 005			
Poss Erica 327			KM Broken Bow 002			
<b>ANGUS</b>			Poss Erica 1203			
JMB Traction 292			Sitz Top Game 561X			
<b>Poss Erica 7172</b>			JMB Emulota 013			
Poss Erica 397			Connealy Right Answer 746			
			Poss Erica 9138			

CED	BW	WW	YW	SC	HP	CEM	MILK
9	0.7	70	136	0.63	7.6	15	23
CW	MARB	RE	\$M	\$F	\$C	\$B	\$C
54	1.00	0.51	56	105	66	171	278

*Sells bred to Sitz Resilient 10208 due 1/17/21 with a sexed heifer embryo. 913 ranks in top 25% for 11 different EPDs or \$values. 913 posted ratios of 101 WR and 112 YWR. A good Poss Achievement daughter with top end marbling. Poss Achievement is a featured herd sire at Sitz Angus, MT and is starting to leave a top set of females across the country. He was the \$20,000 top selling bull of the 2017 Bull Sale and is a featured bull in the ABS lineup. With over 800 BW records, he currently is top 3% BW, 10% Marbling, 15% YW and \$B and 20% WW.*



**Lot 15 Poss Erica 913**



# spring bred heifers

## 16 Poss Pride 907

COW	REG 19487508	DOB 01/24/19	TAT 907				
Poss Lasting Impact 3118		Poss Easy Impact 0119					
<b>Poss Achievement</b>		Poss Blackbird 005					
Poss Erica 327		KM Broken Bow 002					
<b>ANGUS</b>		Poss Erica 1203					
KR Cash 3839		Barstow Cash					
<b>Poss Pride 7115</b>		WK Primrose Lady 1834					
Poss Pride 5136		Connealy Uptown 098E					
		Poss Pride 2190					
CED	BW	WW	YW	SC	HP	CEM	MILK
14	-0.9	65	121	0.89	16.2	18	20
CW	MARB	RE	\$M	\$F	\$G	\$B	\$C
49	0.74	0.76	72	95	59	154	272

*Sells bred to Poss Rawhide due 1/26/21 with a sexed heifer embryo. 907 ranks in the top 25% for 14 different EPDs or \$values. Excellent balance with good CED to YW spread.*

## 18 Poss Ellunamere 9530

COW	REG 19513873	DOB 03/02/19	TAT 9530				
KM Broken Bow 002		Summitcrest Complete 1P55					
<b>Spring Cove Reno 4021</b>		Summitcrest Princess 0P12					
Spring Cove Liza 021		C C A Emblazon 702					
<b>ANGUS</b>		Spring Cove Liza 721					
Poss Easy Impact 0119		Poss Total Impact 745					
<b>Poss Ellunamere 5507</b>		Poss Elmaretta 736					
Poss Ellunamere 119		SydGen Mandate 6079					
		Poss Ellunamere 4601					
CED	BW	WW	YW	SC	HP	CEM	MILK
6	1.3	81	135	1.08	12.6	11	31
CW	MARB	RE	\$M	\$F	\$G	\$B	\$C
56	0.90	0.59	65	90	65	155	266

*Sells bred to Sitz Resilient 10208 due 1/25/21 with a sexed heifer embryo. 9530 ranks in top 25% for 15 different EPDs or \$values. Beautifully made daughter of Spring Cove Reno from our ET program. The donor dam records 9@110 Marbling and 9@101 RE ratio. 5507 was a feature of the 2018 Bull Sale where she was the high selling donor for \$20,000 to Jason Jagels, NE.*

## 19 Poss Emulous Elira 9122

COW	REG 19513868	DOB 02/17/19	TAT 9122				
Connealy Glory 4127		Connealy Consensus					
<b>Connealy Mainstay</b>		Enchant of Conanga 2423					
Jayce of Conanga 318E		Connealy Hemisphere 957L					
<b>ANGUS</b>		Jase of Conanga 4660					
S A V Priority 7283		S A V Final Answer 0035					
<b>Poss Emulous Elira 344</b>		S A V Blackcap May 5530					
Poss Emulous Elira 8508		G A R Predestined					
		Poss Emulous Elira 610					
CED	BW	WW	YW	SC	HP	CEM	MILK
4	2.2	66	117	0.90	10.4	4	32
CW	MARB	RE	\$M	\$F	\$G	\$B	\$C
46	0.51	0.90	79	89	49	139	259

*Sells bred to Poss Rawhide due 1/22/21 with a sexed heifer embryo. 9122 ranks in top 25% for 14 different EPDS or \$values and recorded a 102 WWR.*

## 17 Poss Blackbird 9125

COW	REG 19487488	DOB 02/18/19	TAT 9125				
EF Commando 1366		EF Complement 8088					
<b>Baldrige Compass C041</b>		Riverbend Young Lucy W1470					
Baldrige Isabel Y69		Styles Upgrade J59					
<b>ANGUS</b>		Baldrige Isabel T935					
R/M Ironstone 4047		C A Future Direction 5321					
<b>Poss Blackbird 109</b>		B/R Ruby of Tiffany 5144					
Poss Blackbird 912		Poss Total Impact 745					
		Poss Blackbird 747					
CED	BW	WW	YW	SC	HP	CEM	MILK
1	1.6	67	106	1.35	11.4	5	29
CW	MARB	RE	\$M	\$F	\$G	\$B	\$C
48	1.02	0.80	65	85	72	158	270

*Sells bred to Heiken Broadview due 1/26/21 with a sexed heifer embryo. 9125 ranks in top 25% for 10 different EPDs or \$values and posted a 105 WWR. This is a daughter of Baldrige Compass, who was a member of the "great eight" who sold at the Baldrige Genetics Bull Sale in 2016. Compass is a specimen. Even today, he romes the pastures like a two-year old. He currently has over 950 progeny and posts a -0.4 BW and 1.03 Marbling. His cattle are the cowboy kind with progressive genetics under the hide. His greatest features will be the excellent daughters that can have a herd built around them.*



W  
D

Lot 18 Poss Ellunamere 9530

## 20 Poss Everelda 963

COW	REG 19487518	DOB 02/10/19	TAT 963				
Poss Lasting Impact 3118		Poss Easy Impact 0119					
<b>Poss Achievement</b>		Poss Blackbird 005					
Poss Erica 327		KM Broken Bow 002					
<b>ANGUS</b>		Poss Erica 1203					
Sitz Onward 3215		Connealy Onward					
<b>Poss Everelda 102</b>		Sitz Pride 36N					
Three Trees Everelda S0727		Riverbend Mile High 3718					
		Three Trees Everelda 9064					
CED	BW	WW	YW	SC	HP	CEM	MILK
13	0.0	63	114	1.91	13.5	13	31
CW	MARB	RE	\$M	\$F	\$G	\$B	\$C
52	0.72	0.90	64	88	58	146	253

*Sells bred to Sitz Resilient 10208 due 1/21/21 with a sexed heifer embryo. 963 ranks in top 25% for 17 different EPDs or \$values and posted a 104 WWR. Another daughter of Poss Achievement with excellent CED to YW spread with top percentiles for carcass merit.*

# spring bred heifers



**Lot 21 Poss Ellunamere 917**

## 21 Poss Ellunamere 917

**COW REG 19513864 DOB 01/28/19 TAT 917**

Connealy Glory 4127  
**Connealy Mainstay**  
 Jayce of Conanga 318E  
**ANGUS**  
 Baldrige Compass C041  
**Poss Ellunamere 714**  
 Poss Ellunamere 5535

Connealy Consensus  
 Enchant of Conanga 2423  
 Connealy Hemisphere 957L  
 Jase of Conanga 4660  
 EF Commando 1366  
 Baldrige Isabel Y69  
 Poss Easy Impact 0119  
 Poss Ellunmere 0170

CED	BW	WW	YW	SC	HP	CEM	MILK
8	0.7	68	127	0.20	5.5	7	25
CW	MARB	RE	\$M	\$F	\$C	\$B	\$C
50	0.90	0.78	40	98	66	165	254

*Sells bred to Poss Rawhide due 2/14/21. 917 ranks in top 25% for 13 different EPDs or \$values and posted a 109 WWR. Beautiful daughter of Connealy Mainstay with his classic look of angularity, depth of body and squared up hip. One of the good bred heifers in the sale here.*



**Lot 22 Poss Blueblood Lady 910**

## 22 Poss Blueblood Lady 910

**COW REG 19545909 DOB 01/26/19 TAT 910**

Poss Lasting Impact 3118  
**Poss Achievement**  
 Poss Erica 327  
**ANGUS**  
 V A R Discovery 2240  
**Poss Blueblood Lady 7611**  
 Poss Blueblood Lady 9113

Poss Easy Impact 0119  
 Poss Blackbird 005  
 KM Broken Bow 002  
 Poss Erica 1203  
 A A R Ten X 7008 S A  
 Deer Valley Rita 0308  
 Connealy Kaboom 380  
 Poss Blueblood Lady 713

CED	BW	WW	YW	SC	HP	CEM	MILK
12	-1.7	64	121	1.86	13.1	13	28
CW	MARB	RE	\$M	\$F	\$C	\$B	\$C
51	0.97	0.50	50	92	66	158	255

*Sells bred to Poss Rawhide due 2/13/21. 910 ranks in top 25% for 18 different EPDs or values and posted a 104 WWR. Good VAR Discovery daughter and her dam comes from one of the great cow families on the ranch.*



**Service Sire Poss Rawhide**

## 23 Poss Erica 9260

**COW REG 19677311 DOB 03/12/19 TAT 9260**

baldrige Xpand x743  
**Baldrige Colonel C251**  
 Baldrige Isabel Y69  
**ANGUS**  
 Connealy Western Cut  
**Poss Erica 635**  
 Poss Erica 420

Hoover Dam  
 Baldrige Queen S87  
 Styles Upgrade J59  
 Baldrige Isabel T935  
 D R Sierra Cut 7404  
 Eura Elga of Conanga 9109  
 PA Safeguard 021  
 Poss Erica 2507

CED	BW	WW	YW	SC	HP	CEM	MILK
2	0.0	73	126	0.56	14.3	10	29
CW	MARB	RE	\$M	\$F	\$C	\$B	\$C
48	0.60	1.01	75	77	60	137	253

*Sells bred to Poss Rawhide due 1/23/21 with a sexed heifer embryo. 9260 ranks in the top 25% for 12 different EPDs or \$values and posted a 106 WWR. A daughter of the \$580,000 Baldrige Colonel, who maintains top 10% RE and Docility, top 15% YW, top 20% Claw and Marbling and top 25% \$B with over 3400 birth weights recorded.*

# spring bred heifers

## 24 Poss Erica 903

COW	REG	DOB	TAT				
Connealy Glory 4127	19513860	01/22/19	903				
<b>Connealy Mainstay</b>							
Jayce of Conanga 318E							
<b>ANGUS</b>							
Poss Sudden Impact							
<b>Poss Erica 7205</b>							
Poss Erica 417							
<b>CED</b>	<b>BW</b>	<b>WW</b>	<b>YW</b>	<b>SC</b>	<b>HP</b>	<b>CEM</b>	<b>MILK</b>
6	1.8	79	142	0.83	6.3	7	29
<b>CW</b>	<b>MARB</b>	<b>RE</b>	<b>\$M</b>	<b>\$F</b>	<b>\$G</b>	<b>\$B</b>	<b>\$C</b>
63	0.66	0.70	46	106	54	160	254

*Sells bred to Sitz Resilient 10208 due 1/23/21 with a sexed heifer embryo. 903 ranks in top 25% for 14 different EPDS or \$values and recorded ratios of 106 WWR and 103 YWR. Beautiful Mainstay daughter with all the phenotypic maternal traits.*



Lot 24 **Poss Erica 903**

## 25 Poss Ellunamere 988

COW	REG	DOB	TAT				
Mogck Bullseye	19513851	02/14/19	988				
<b>Hoover No Doubt</b>							
Miss Blackcap Ellston J2							
<b>ANGUS</b>							
Connealy Consensus 7229							
<b>Poss Ellunamere 357</b>							
Poss Ellunamere 4603							
<b>CED</b>	<b>BW</b>	<b>WW</b>	<b>YW</b>	<b>SC</b>	<b>HP</b>	<b>CEM</b>	<b>MILK</b>
7	0.0	63	123	1.29	8.0	9	22
<b>CW</b>	<b>MARB</b>	<b>RE</b>	<b>\$M</b>	<b>\$F</b>	<b>\$G</b>	<b>\$B</b>	<b>\$C</b>
52	0.64	0.64	45	97	53	150	240

*Sells bred to Jindra Blackout due 3/2/21. 988 ranks in the top 25% for 13 different EPDS or \$values and posted a 109 WWR. This is a well put together Hoover No Doubt daughter. You will be pleased with the foundation and result.*



Lot 25 **Poss Ellunamere 988**



# POSS equals POWER

# spring heifer calves



PW

Lot 26 **Poss Isabel 0525**

## 26 Poss Isabel 0525

COW	REG	19739594	DOB	02/11/20	TAT	0525	
Connealy Black Granite			Connealy Consensus 7229				
<b>Bar R Jet Black 5063</b>			Eura Elga of Conanga 9109				
Bar R Iris Anita 0113			Sitz Upward 307R				
<b>ANGUS</b>			Bar R Anita 7081				
HAYNES Outright 452			K C F Bennett Absolute				
<b>Baldrige Isabel D176</b>			HAYNES ND 454 Miss 179				
Baldrige Isabel Y69			Styles Upgrade J59				
			Baldrige Isabel T935				
CED	BW	WW	YW	SC	HP	CEM	MILK
-1	3.4	96	160	0.71	12.2	5	19
CW	MARB	RE	\$M	\$F	\$G	\$B	\$C
73	0.70	0.92	55	109	58	167	272

0525 ranks in the top 25% for 15 different EPDs or \$values. 0525 is one of the highest growth females in the offering. She is a granddaughter of the great Baldrige Isabel Y69. Her dam, Baldrige Isabel D176, is owned with Reverse Rocking R Ranch, NM and a full sister to Baldrige Isabel D275, who is owned by Eagle Grip Angus, CA and the dam of E G Eyes On You. Eyes On You was easily the top gaining bull of the historic Cal Poly Bull Test in 2019 and topped the sale for \$30,000 selling to Genex. 0525 is a deep quartered Isabel.



PW

Grand Dam to Lot 26 **Baldrige Isabel Y69**

## 27a Poss Rita 0640

COW	REG	19738395	DOB	01/26/20	TAT	0640	
Hoover No Doubt			Mogck Bullseye				
<b>Connealy Long Range</b>			Miss Blackcap Ellston J2				
Bunty Lay of Conanga 4930			Connealy Greeley				
<b>ANGUS</b>			Bunty Lana of Conanga 4102				
Connealy Uptown 098E			Sitz Upward 307R				
<b>Poss Rita 528</b>			Jace of Conanga 4660 818N				
Rita OC7 of 5M1 Credence			SQ Credence 67S				
			Rita 5M1 of 2536 Predestined				
CED	BW	WW	YW	SC	HP	CEM	MILK
6	1.9	70	120	0.08	13.1	8	28
CW	MARB	RE	\$M	\$F	\$G	\$B	\$C
60	0.66	0.81	75	105	57	162	285

0640 ranks in top 25% for 15 different EPDs or \$values. First female offered from the featured Connealy Long Range herd sire who is a featured member of ALTA Genetics. He ranks in the top 25% for 13 different EPDs or \$values. The flush mate bulls to 0640 are top candidates in the 2021 Bull Sale.



PW

Lot 27B **Poss Rita 0516**

## 27b Poss Rita 0516

COW	REG	19738342	DOB	02/09/20	TAT	0516	
Hoover No Doubt			Mogck Bullseye				
<b>Connealy Long Range</b>			Miss Blackcap Ellston J2				
Bunty Lay of Conanga 4930			Connealy Greeley				
<b>ANGUS</b>			Bunty Lana of Conanga 4102				
Connealy Uptown 098E			Sitz Upward 307R				
<b>Poss Rita 528</b>			Jace of Conanga 4660 818N				
Rita OC7 of 5M1 Credence			SQ Credence 67S				
			Rita 5M1 of 2536 Predestined				
CED	BW	WW	YW	SC	HP	CEM	MILK
7	1.2	79	141	0.49	13.4	12	26
CW	MARB	RE	\$M	\$F	\$G	\$B	\$C
65	0.72	0.69	60	112	59	171	282

0516 ranks in top 25% for 15 different EPDs or \$values. A full sister to 27A, 0516 is dense made and attractive. Their donor dam, Poss Rita 528, has put more 2020 born ET calves on the ground than any of our donors. She has great phenotype and EPD balance of 16 top 25% rankings.

# fall open heifers

## 28 Poss Blueblood 9734

COW	REG	DOB	TAT
Basin Payweight 1682	19597265	09/05/19	9734
<b>Poss Maverick</b>			
Poss Pride 5163			
<b>ANGUS</b>			
A A R Ten X 7008 S A			
<b>Poss Blueblood 5508</b>			
Poss Blueblood 920			
Basin Payweight 006S			
21AR O Lass 7017			
Poss Hoover Dam 2509			
Poss Pride 9526			
Mytty In Focus			
A A R Lady Kelton 5551			
Connealy All Around			
Poss Blueblood Lady 5114			

CED	BW	WW	YW	SC	HP	CEM	MILK
5	2.1	72	136	1.31	11.7	10	29
CW	MARB	RE	\$M	\$F	\$G	\$B	\$C
68	1.26	0.62	55	120	81	201	316

**Sells open.** 9734 ranks in top 25% for 15 different EPDs or \$values including top 1% for RADG, \$F, \$B and \$C. Poss Blueblood 920 on the bottom side of the pedigree is one of the greatest cows ever bred at Poss Angus. Top heifer here that will add to any replacement pen.



**Sire Poss Maverick**

## 29 Poss Ellunamere 9747

COW	REG	DOB	TAT
Basin Payweight 1682	19597266	09/09/19	9747
<b>Poss Maverick</b>			
Poss Pride 5163			
<b>ANGUS</b>			
Poss Easy Impact 0119			
<b>Poss Ellunamere 5533</b>			
Poss Ellunmere 0170			
Basin Payweight 006S			
21AR O Lass 7017			
Poss Hoover Dam 2509			
Poss Pride 9526			
Poss Total Impact 745			
Poss Elmaretta 736			
G A R Predestined			
Poss Ellunmere 204			

CED	BW	WW	YW	SC	HP	CEM	MILK
9	-1.3	65	118	1.64	7.9	8	38
CW	MARB	RE	\$M	\$F	\$G	\$B	\$C
65	1.33	0.66	36	115	81	197	292

**Sells open.** 9747 ranks in top 25% for an excellent 18 different EPDs or \$values including top 1% \$B. Excellent cross of Poss Maverick back on an Easy Impact daughter.



**Lot 29 Poss Ellunamere 9747**

## 30 Poss Emulous Elira 9903

COW	REG	DOB	TAT
Silveiras Conversion 8064	19780150	09/03/19	9903
<b>BUBS Southern Charm AA31</b>			
Hickory Hill Erica 009			
<b>ANGUS</b>			
Connealy In Focus 4925			
<b>Poss Emulous Elira 5609</b>			
Poss Emulous Elira 216			
BT Crossover 758N			
EXG Saras Dream S609 R3			
Connealy Stimulus 8419			
Hickory Hill Erica TA32			
Mytty In Focus			
Black Cana of Conanga 206			
Poss Easy Impact 0119			
Poss Emulous Elira 033			

CED	BW	WW	YW	SC	HP	CEM	MILK
4	1.2	69	113	0.99	9.6	12	21
CW	MARB	RE	\$M	\$F	\$G	\$B	\$C
45	1.01	0.52	80	83	65	148	272

**Sells open.** Ranks in top 25% for 12 different EPDs or \$values. The first of the Bubs Southern Charm sire group to be offered from the ranch. Long sided female with an excellent 1.01 marbling score. She is out of the donor program from a dam who records a 3@106 marbling ratio.



**Lot 30 Poss Emulous Elira 9903**

# fall open heifers and pairs



W  
D

Lot 31 Poss Ellunamere 9719

## 31 Poss Ellunamere 9719

COW	REG 19780128	DOB 09/03/19	TAT 9719				
V A R Discovery 2240		A A R Ten X 7008 S A					
<b>Poss Marvel</b>		Deer Valley Rita 0308					
Poss Elmaretta 505		Poss Element 215					
<b>ANGUS</b>		Poss Elmaretta 341					
S A V Potential 0205		S A V Pioneer 7301					
<b>Poss Ellunamere 5726</b>		S A V Elba 7021					
Poss Ellunamere 1603		G A R Predestined					
		Poss Ellunamere 709					
CED	BW	WW	YW	SC	HP	CEM	MILK
4	3.1	88	159	1.26	11.9	7	26
CW	MARB	RE	\$M	\$F	\$C	\$B	\$C
75	0.85	0.69	55	109	61	170	275

**Sells open.** 9719 ranks in top 25% for 14 different EPDs or \$values including top 1% for WW, YW and CW. Sired by Poss Marvel who is a member of the Alta Genetics beef line up and maintains 16 different EPDs or \$values in top 25% including top 1% WW, YW and Scrotal.

## 32 Poss Elmaretta 8740

COW	REG 19428777	DOB 09/06/18	TAT 8740				
Silveiras Conversion 8064		BT Crossover 758N					
<b>BUBS Southern Charm AA31</b>		EXG Saras Dream S609 R3					
Hickory Hill Erica 009		Connealy Stimulus 8419					
<b>ANGUS</b>		Hickory Hill Erica TA32					
Baldrige Willie Y34		Baldrige Waylon W34					
<b>Poss Elmaretta 4718</b>		Baldrige Duchess T69					
Poss Elmaretta 2716		Poss Total 7502					
		Poss Elmaretta 5506					
CED	BW	WW	YW	SC	HP	CEM	MILK
2	1.9	67	120	1.83	15.0	7	26
CW	MARB	RE	\$M	\$F	\$C	\$B	\$C
45	0.85	0.46	73	87	61	148	265

**Sells open with Lot 32A at side.** 8740 ranks in top 25% for 16 different EPDs or \$values. 8740 posted an individual WWR of 109. Excellent young fall pair that represents some of the best sires in the breed.

## 32a Poss Elmaretta 0702

COW	REG 19813419	DOB 08/23/20	TAT 0702				
Connealy Confidence Plus		Connealy Confidence 0100					
<b>E&amp;B Plus One</b>		Elbanna of Conanga 1209					
E&B Lady 1023 Precision 936		E&B 1680 Precision 1023					
<b>ANGUS</b>		E&B Lady 878 New Design 441					
BUBS Southern Charm AA31		Silveiras Conversion 8064					
<b>Poss Elmaretta 8740</b>		Hickory Hill Erica 009					
Poss Elmaretta 4718		Baldrige Willie Y34					
		Poss Elmaretta 2716					
CED	BW	WW	YW	SC	HP	CEM	MILK
8	1.4	68	123	0.92	13.7	7	25
CW	MARB	RE	\$M	\$F	\$C	\$B	\$C
44	0.68	0.66	77	88	56	144	264

## 33 Poss Erica 4112

COW	REG 17923790	DOB 02/18/14	TAT 4112				
Mytty In Focus		S A F Focus of E R					
<b>Connealy In Focus 4925</b>		Mytty Countess 906					
Black Cana of Conanga 206		Millers Bullseye J373					
<b>ANGUS</b>		Black Cryse of Conanga 204					
G A R Predestined		B/R New Design 036					
<b>Poss Erica 1509</b>		G A R Ext 4206					
Poss Erica 604		BR Midland					
		Poss Erica 4506					
CED	BW	WW	YW	SC	HP	CEM	MILK
1	2.6	68	109	1.34	14.7	9	23
CW	MARB	RE	\$M	\$F	\$C	\$B	\$C
39	0.81	0.61	79	80	60	140	261

**Sells open with Lot 33A at side.** 4112 ranks in top 25% for 15 different EPDs or \$values. She records 2@105 WRR and 1@117 marbling ratio.

## 33a Poss Erica 0734

COW	REG 19813368	DOB 09/02/20	TAT 0734				
Basin Payweight 1682		Basin Payweight 0065					
<b>Poss Maverick</b>		21AR O Lass 7017					
Poss Pride 5163		Poss Hoover Dam 2509					
<b>ANGUS</b>		Poss Pride 9526					
Connealy In Focus 4925		Mytty In Focus					
<b>Poss Erica 4112</b>		Black Cana of Conanga 206					
Poss Erica 1509		G A R Predestined					
		Poss Erica 604					
CED	BW	WW	YW	SC	HP	CEM	MILK
3	1.9	70	119	1.45	11.4	7	30
CW	MARB	RE	\$M	\$F	\$C	\$B	\$C
50	1.16	0.61	64	95	76	171	285

Genomic EPDs will be updated prior to the sale.

# bred cows

## 34 Poss Erica 749

**COW REG 18962394 DOB 02/04/17 TAT 749**

Basin Payweight 006S  
**Basin Payweight 1682**  
 21AR O Lass 7017

**ANGUS**  
 Poss Element 215  
**Poss Erica 551**  
 Poss Erica 704

Vermilion Payweight J847  
 Basin Lucy 3829  
 HARB Pendleton 765 J H  
 21AR O Lass F24A

Poss Easy Impact 0119  
 Poss Erica 004  
 TC Total 410  
 Poss Erica 596

CED	BW	WW	YW	SC	HP	CEM	MILK
6	1.3	71	129	1.22	13.2	13	28
CW	MARB	RE	\$M	\$F	\$G	\$B	\$C
63	0.52	0.23	71	114	36	150	266

**Sells bred to WAR Cavalry B063 Z044 due 2/19/21. 749 ranks in top 25% for 16 different EPDs or \$values.**



**W P** Lot 34 **Poss Erica 749**

## 35 Poss Blackbird 738

**COW REG 18962465 DOB 02/02/17 TAT 738**

Basin Payweight 006S  
**Basin Payweight 1682**  
 21AR O Lass 7017

**ANGUS**  
 MAF Resolution 2326  
**Poss Blackbird 5162**  
 Poss Blackbird 154

Vermilion Payweight J847  
 Basin Lucy 3829  
 HARB Pendleton 765 J H  
 21AR O Lass F24A

Connealy Final Solution  
 B M Eileen 2114  
 Poss Total Impact 745  
 Poss Blackbird 9539

CED	BW	WW	YW	SC	HP	CEM	MILK
11	-1.3	67	114	1.19	15.7	9	35
CW	MARB	RE	\$M	\$F	\$G	\$B	\$C
47	0.68	0.50	96	83	47	130	265

**Sells bred to Hoover No Doubt due 2/21/21. 738 ranks in top 25% for 14 different EPDs or \$values including top 1% for \$M and \$W.**



**W P** Service Sire **Hoover No Doubt**

## 36 M K Chloe 706

**COW REG 18959376 DOB 01/26/17 TAT 706**

Jindra 3rd Dimension  
**Jindra Acclaim**  
 Jindra Blackbird Lassy 1111

**ANGUS**  
 Connealy Capitalist 028  
**M K Chloe 511**  
 M K Chloe 312

Jindra Double Vision  
 Jindras Sapphire J 417  
 Connealy Impression  
 Jindras Enchantress J 102

S A V Final Answer 0035  
 Prides Pita of Conanga 8821  
 S A V Republic 1176  
 Basin Chloe 6U59

CED	BW	WW	YW	SC	HP	CEM	MILK
5	1.7	83	154	1.35	12.6	11	28
CW	MARB	RE	\$M	\$F	\$G	\$B	\$C
76	0.82	0.67	54	134	62	196	308

**Sells bred to Poss Rawhide due 2/25/21. 706 ranks in top 25% for an excellent 18 different EPDS or \$values including top 1% for WW, YW, PAP, CW, \$F, \$B and \$C and records 1@115 WR. A powerful female that posts huge growth documented by her EPD profile. Owned with Mr. K Angus, NE.**



**W P** Lot 36 **M K Chloe 706**

# bred cows



**W D** Dam of Lot 37A & 37B **Vintage Blackcap 5194**



**W D** Flush Brother to Lot 37A & 37B **Poss Paymaster**

## 37a Poss Blackcap 8609

**COW REG 19214620 DOB 03/08/18 TAT 8609**

Basin Payweight 006S  
**Basin Payweight 1682**  
21AR O Lass 7017

**ANGUS**

V A R Discovery 2240  
**Vintage Blackcap 5194**  
7L Blackcap 9324

Vermilion Payweight J847  
Basin Lucy 3829  
HARB Pendleton 765 J H  
21AR O Lass F24A

A A R Ten X 7008 S A  
Deer Valley Rita 0308  
Connealy Forward  
Tehama Blackcap P846

CED	BW	WW	YW	SC	HP	CEM	MILK
10	0.3	75	130	-0.21	11.1	13	29
CW	MARB	RE	\$M	\$F	\$G	\$B	\$C
52	0.58	0.77	73	92	49	141	256

*Sells bred to Heiken Broadview due 2/10/21 with a sexed heifer embryo. 8609 ranks in the top 25% for 15 different EPDs or \$values. Her dam, VAR Blackcap 5194, currently is owned by Montana Angus Ranch, MT.*

## 37b Poss Blackcap 8625

**COW REG 19214610 DOB 03/12/18 TAT 8625**

Basin Payweight 006S  
**Basin Payweight 1682**  
21AR O Lass 7017

**ANGUS**

V A R Discovery 2240  
**Vintage Blackcap 5194**  
7L Blackcap 9324

Vermilion Payweight J847  
Basin Lucy 3829  
HARB Pendleton 765 J H  
21AR O Lass F24A

A A R Ten X 7008 S A  
Deer Valley Rita 0308  
Connealy Forward  
Tehama Blackcap P846

CED	BW	WW	YW	SC	HP	CEM	MILK
1	1.7	73	122	0.48	14.6	6	29
CW	MARB	RE	\$M	\$F	\$G	\$B	\$C
32	1.07	0.20	81	65	65	130	250

*Sells bred to WAR Cavalry B063 Z044 due 2/14/21 with a sexed heifer embryo. 8625 ranks in top 25% for 11 different EPDs or \$values. Elite opportunity to add a female whose flush brother was a past high seller to Alta Genetics, bred to one of the high in demand bulls, the deceased WAR Cavalry whose semen has brought in upwards of \$400.*



**W D** Lot 38 **Poss Blackcap 850**

## 38 Poss Blackcap 850

**COW REG 19102400 DOB 02/09/18 TAT 850**

PA Safeguard 021  
**Poss Bodyguard**  
Poss Eirca 8502

**ANGUS**

Mytty In Focus  
**Poss Blackcap 007**  
Poss Blackcap 8610

G A R New Design 5050  
PA Lorna Marshall 2905-730  
Connealy Onward  
Poss Erica 604

S A F Focus of E R  
Mytty Countess 906  
Rito 112 of 2536 Rito 616  
Poss Blackcap 205

CED	BW	WW	YW	SC	HP	CEM	MILK
7	1.8	72	138	2.01	14.6	10	24
CW	MARB	RE	\$M	\$F	\$G	\$B	\$C
67	0.88	0.62	58	120	64	183	295

*Sells bred to Poss Rawhide due 2/18/21 with a sexed heifer embryo. 850 ranks in the top 25% for 15 different EPDs or \$values including top 2% for \$B and \$C and recorded an individual WWR of 107.*



# bred cows

## 39 Poss Erica 8187

COW	REG	DOB	TAT				
REG 19094322	DOB 03/03/18	TAT 8187					
EF Commando 1366	EF Complement 8088						
Baldrige Compass C041	Riverbend Young Lucy W1470						
Baldrige Isabel Y69	Styles Upgrade J59						
<b>ANGUS</b>	Baldrige Isabel T935						
Poss Irresistible 3541	Poss Easy Impact 0119						
Poss Erica 6143	Poss Ellunamere 119						
Poss Erica 314	Connealy Consensus 7229						
	Poss Erica 107						
CED	BW	WW	YW	SC	HP	CEM	MILK
8	0.9	64	119	1.50	17.0	10	30
CW	MARB	RE	\$M	\$F	\$G	\$B	\$C
52	0.89	0.64	66	92	65	157	270

*Sells bred to Poss Maverick due 2/17/21 with a sexed heifer embryo. 8187 ranks in the top 25% for an excellent 20 different EPDs or \$values. As well balanced EPD profile as there is in the offering. Good young female with ideal udder quality.*



## 40 Poss Blueblood 8634

COW	REG	DOB	TAT				
REG 19306678	DOB 01/30/18	TAT 8634					
Basin Payweight 1682	Basin Payweight 006S						
TEX Playbook 5437	21AR O Lass 7017						
Rita 1C43 of 9M26 Complete	Summitcrest Complete 1P55						
<b>ANGUS</b>	Rita 9M26 of Rita 5F56 Pred						
Connealy All Around	Connealy Whitman						
Poss Blueblood 920	Entrust of Conanga 894						
Poss Blueblood Lady 5114	Hyline Right Time 338						
	Poss Blueblood Lady 063						
CED	BW	WW	YW	SC	HP	CEM	MILK
9	0.6	64	105	1.05	14.4	12	32
CW	MARB	RE	\$M	\$F	\$G	\$B	\$C
42	0.86	0.52	81	82	58	140	263

*Sells bred to Jindra Blackout due 2/25/21 with a sexed heifer embryo. 8634 ranks in the top 25% for 14 different EPDs or \$values. One of the top cow families on the ranch.*



## 41 Poss Erica 8142

COW	REG	DOB	TAT				
REG 19100254	DOB 02/21/18	TAT 8142					
Basin Payweight 1682	Basin Payweight 006S						
TEX Playbook 5437	21AR O Lass 7017						
Rita 1C43 of 9M26 Complete	Summitcrest Complete 1P55						
<b>ANGUS</b>	Rita 9M26 of Rita 5F56 Pred						
Poss Element 215	Poss Easy Impact 0119						
Poss Erica 405	Poss Erica 004						
Poss Erica 212	Connealy Right Answer 746						
	Poss Erica 017						
CED	BW	WW	YW	SC	HP	CEM	MILK
14	-0.2	67	115	1.31	13.5	19	35
CW	MARB	RE	\$M	\$F	\$G	\$B	\$C
53	0.47	0.31	86	97	35	132	257

*Sells bred to Hoover No Doubt due 2/17/21 with a sexed heifer embryo. 8142 ranks in the top 25% for 15 different EPDs or \$values including top 1% for Docility, \$M and \$W.*

## 42 Poss Erica 814

COW	REG	DOB	TAT				
REG 19107850	DOB 01/26/18	TAT 814					
Basin Payweight 1682	Basin Payweight 006S						
TEX Playbook 5437	21AR O Lass 7017						
Rita 1C43 of 9M26 Complete	Summitcrest Complete 1P55						
<b>ANGUS</b>	Rita 9M26 of Rita 5F56 Pred						
Poss Element 215	Poss Easy Impact 0119						
Poss Erica 638	Poss Erica 004						
Poss Erica 1180	Connealy Right Answer 6238						
	Poss Erica 8111						
CED	BW	WW	YW	SC	HP	CEM	MILK
10	1.4	60	108	0.40	14.4	15	34
CW	MARB	RE	\$M	\$F	\$G	\$B	\$C
46	0.35	0.67	92	89	40	128	258

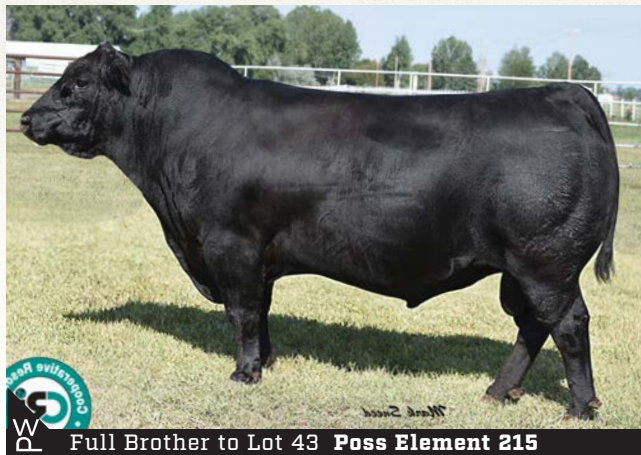
*Sells bred to Jindra Blackout due 2/16/21 with a sexed heifer embryo. 814 ranks in top 25% for 13 different EPDs or \$values including top 1% \$M. The Playbooks are deep sided, easy fleshing, and docile with excellent maternal characteristics.*

# bred cows



W  
D

**Lot 43 Poss Erica 7529**



W  
D

Full Brother to Lot 43 **Poss Element 215**

## 43 Poss Erica 7529

**COW REG 18991898 DOB 03/03/17 TAT 7529**

Poss Total Impact 745  
**Poss Easy Impact 0119**  
 Poss Elmaretta 736  
**ANGUS**  
 ALC Big Eye D09N  
**Poss Erica 004**  
 Poss Erica 814

TC Total 410  
 Poss Blackcap 5116  
 Hyline Right Time 338  
 Poss Elmaretta 025  
 C A Future Direction 5321  
 ALC Hazel L12L  
 Rito 112 of 2536 Rito 616  
 Poss Erica 627

CED	BW	WW	YW	SC	HP	CEM	MILK
5	3.6	79	137	0.90	14.0	12	14
CW	MARB	RE	\$M	\$F	\$G	\$B	\$C
54	0.32	0.89	66	96	41	138	245

*Sells bred to Poss Maverick due 2/19/21. 7529 ranks in top 25% for 17 different EPDs or \$values including top 1% for WW, YW and angle. 7529 is a full sister to Poss Element who has received wide national use. A hidden gem in the offering.*

## 44a Poss Erica 7609

**COW REG 18986757 DOB 03/02/17 TAT 7609**

A A R Ten X 7008 S A  
**V A R Discovery 2240**  
 Deer Valley Rita 0308  
**ANGUS**  
 Connealy Consensus 7229  
**Poss Erica 2621**  
 Poss Erica 793

Mytty In Focus  
 A A R Lady Kelton 5551  
 Sitz Upward 307R  
 G A R Objective 2345  
 Connealy Consensus  
 Blue Lilly of Conanga 16  
 Poss 112 524  
 Poss Erica 4507

CED	BW	WW	YW	SC	HP	CEM	MILK
2	1.5	66	125	1.88	11.3	10	29
CW	MARB	RE	\$M	\$F	\$G	\$B	\$C
49	1.16	0.39	46	89	76	165	260

*Sells bred to Square B Atlantis 8060 due 2/11/21. Ranks in the top 25% for 16 different EPDs or \$values. Good Discovery daughter bred to a sire who has received a lot of interest.*

## 44b Poss Erica 7514

**COW REG 18962583 DOB 02/09/17 TAT 7514**

A A R Ten X 7008 S A  
**V A R Discovery 2240**  
 Deer Valley Rita 0308  
**ANGUS**  
 Connealy Consensus 7229  
**Poss Erica 2621**  
 Poss Erica 793

Mytty In Focus  
 A A R Lady Kelton 5551  
 Sitz Upward 307R  
 G A R Objective 2345  
 Connealy Consensus  
 Blue Lilly of Conanga 16  
 Poss 112 524  
 Poss Erica 4507

CED	BW	WW	YW	SC	HP	CEM	MILK
6	1.8	73	132	2.09	13.5	10	29
CW	MARB	RE	\$M	\$F	\$G	\$B	\$C
49	1.02	0.65	55	80	72	152	252

*Sells bred to Square B Atlantis 8060 due 2/16/21. Ranks in top 25% for 17 different EPDs or \$values.*

# bred cows

## 45 Poss Blackbird 4180

**COW REG 18059723 DOB 03/04/14 TAT 4180**

Hoover Dam  
**Poss Hoover Dam 2509**  
 Poss Erica 793

SydGen C C & 7  
 Erica of Ellston C124  
 Poss 112 524  
 Poss Erica 4507  
 B/R New Design 036  
 G A R Ext 4206  
 G A R Grid Maker  
 Riverbend Blackbird 2204

**ANGUS**

G A R Predestined  
**MGSA Blackbird 8022**  
 Riverbend Blackbird 4301

CED	BW	WW	YW	SC	HP	CEM	MILK
7	2.4	61	113	0.77	12.2	7	33
CW	MARB	RE	\$M	\$F	\$G	\$B	\$C
47	1.17	0.65	60	100	77	177	290

*Sells bred to Poss Rawhide due 2/23/21. 4180 ranks in the top 25% for 12 different EPDs or \$values including top 1% \$C. Beautiful uddered female who has performed. She posted 4@104 WWR, 4@105 YWR, 4@115 Marbling and 4@105 RE ratio. 4180 stems from a royally bred pedigree. The sire, 2509, is also the sire of the lot 1. Her dam traces back to Riverbend Blackbird 4301, who is a heralded female with an outstanding track record, most notably known as the dam to Sandpoint Blackbird 8809.*



W  
D

Lot 45 Poss Blackbird 4180

## 46 Poss Erica 539

**COW REG 18355120 DOB 02/07/15 TAT 539**

G A R New Design 5050  
**PA Safeguard 021**  
 PA Lorna Marshall 2905-730

B/R New Design 036  
 G A R Precision 706  
 Woodhill Foresight  
 Petes 2905 Dateline Marshall  
 Baldrige Kaboom K243 KCF  
 Pioneer of Conanga 380  
 Bon View New Design 1407  
 Poss Ideal 613

**ANGUS**

Connealy Kaboom 380  
**Poss Erica 794**  
 Poss Erica 4602

CED	BW	WW	YW	SC	HP	CEM	MILK
3	2.4	62	112	0.81	12.1	3	20
CW	MARB	RE	\$M	\$F	\$G	\$B	\$C
58	1.02	0.68	54	110	73	183	291

*Sells bred to Jindra Blackout due 2/14/21. 539 ranks in top 25% for 14 different EPDs or \$values. She records 3@101 WWR and 1@104 YWR. Easy fleshing, soft made Safeguard female.*



W  
D

Grand Dam of Lot 45 Riverbend Blackbird 4301

## 47 Poss Elmaretta 8615

**COW REG 19240262 DOB 03/08/18 TAT 8615**

Rito 707 of Ideal 3407 7075  
**S A V Resource 1441**  
 S A V Blackcap May 4136

R R Rito 707  
 Ideal 3407 of 1418 076  
 S A V 8180 Traveler 004  
 S A V May 2397  
 TC Total 410  
 Poss Blackcap 5116  
 Hyline Right Time 338  
 Poss Elmaretta 025

**ANGUS**

Poss Total Impact 745  
**Poss Elmaretta 924**  
 Poss Elmaretta 736

CED	BW	WW	YW	SC	HP	CEM	MILK
-2	4.3	81	150	1.70	16.5	6	23
CW	MARB	RE	\$M	\$F	\$G	\$B	\$C
67	0.35	0.71	75	106	39	146	264

*Sells bred to Poss Maverick due 2/9/21 with a sexed heifer embryo. 8615 ranks in top 25% for an excellent 19 different EPDs or \$values including top 1% for WW, YW and CW. A powerhouse young female here that looks the part and matches her breed leading growth EPDs. One of the most promising individuals in the offering, whose dam is a full sister to the great Easy Impact. She will leave a tremendous set of calves in the future with excellent mating flexibility.*



W  
D

Lot 47 Poss Elmaretta 8615

W  
D

# POSS ANGUS

Danny, Kristi, Nolan, Nathan,  
Neleigh and Natalie Poss

48981 801st Rd | Scotia, NE 68875

Danny: 308-571-0417

Nolan: 308-571-0559

Nathan: 308-571-0506



LEADING EDGE GENETICS

FRIDAY - 5:00 PM  
**NOVEMBER 20, 2020**  
AT THE RANCH - SCOTIA, NEBRASKA

**POSS PRIDE 5163**  
18348384

**POSS RITA 5116**  
18349745



**SHE SELLS!**  
Dam of Poss Rita 9150  
\$100,000 High Seller



**SHE SELLS!**  
Dam of Maverick  
Her Progeny Also Sell!

*Pregnancy by Rawhide Also Sells!*

# POSS equals POWER

**SHE SELLS!**

**SHE SELLS!**

**PREGNANCY BY CONNEALY CLARITY SELLS!**

